

# Leading the Change

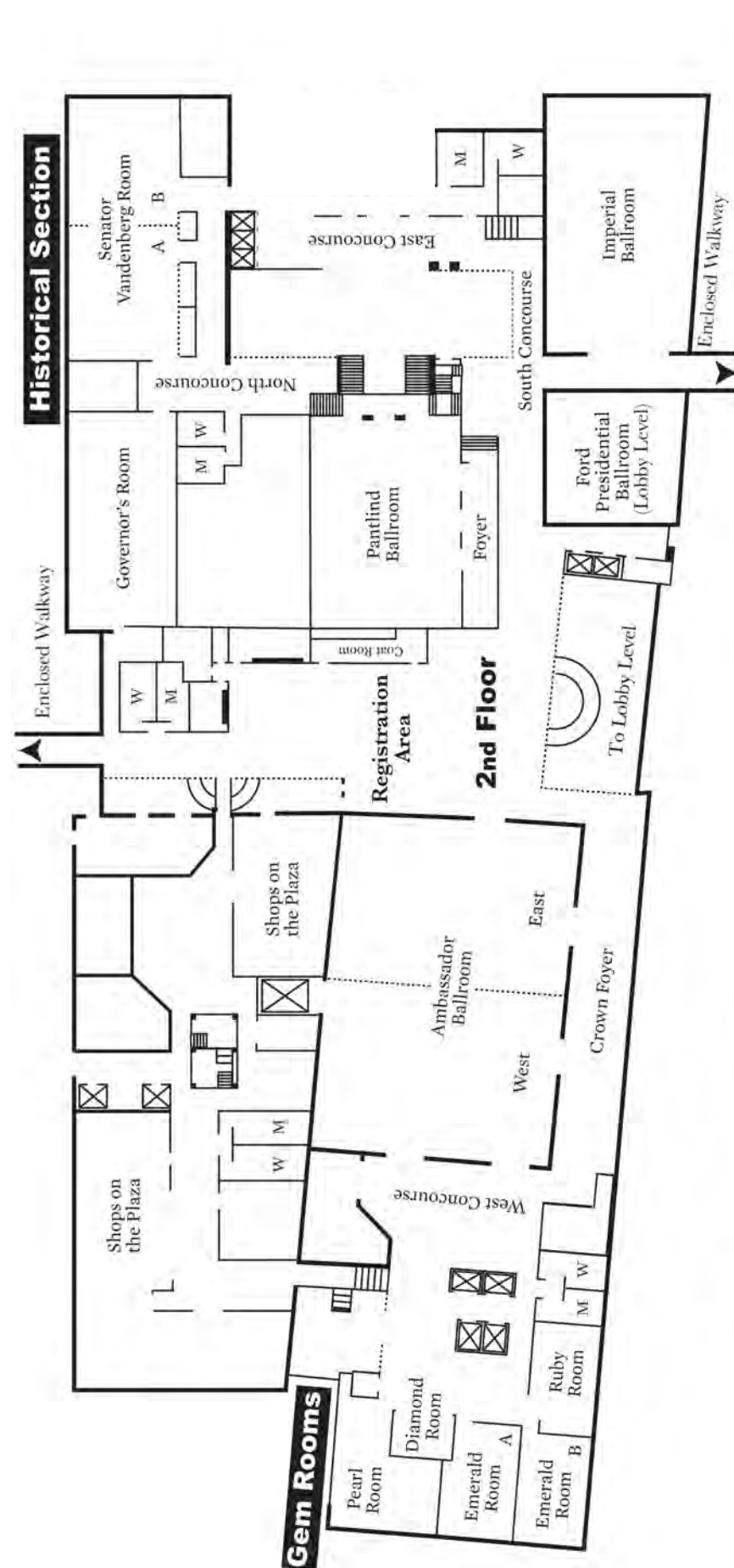
***80<sup>th</sup> Annual MCEC Conference***

**March 4-6, 2020**

**Amway Grand Plaza Hotel • Grand Rapids**

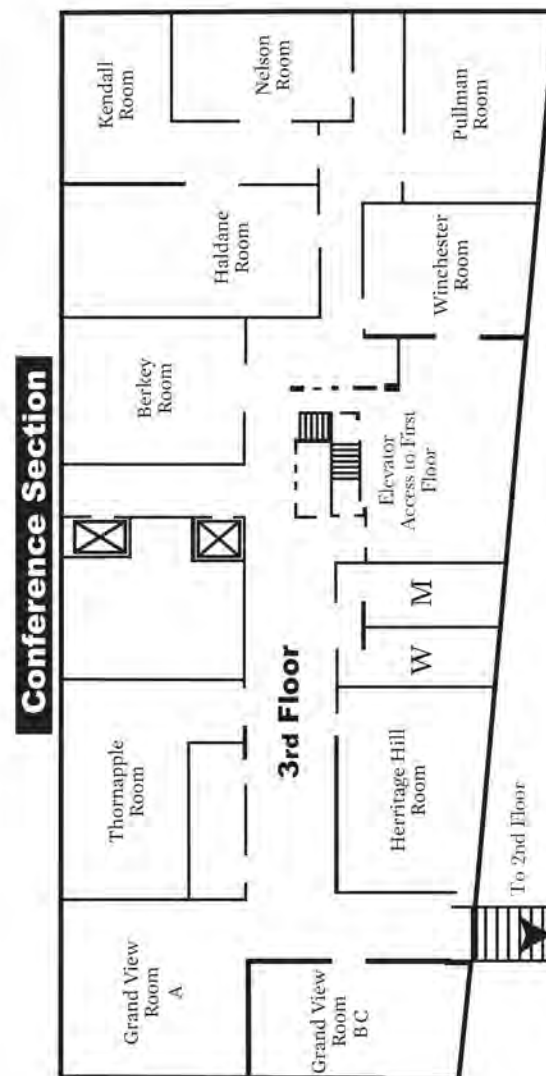


Strengthening the Field of Education to Impact  
Success for Individuals with Exceptionalities



### Directions to DeVos Place:

From the conference registration area, follow the hallway and sky-walk into DeVos Place. Once in DeVos Place, follow signs to your left for the double stairway or elevator to go down to the lower level. Follow signs through the ballroom foyer area, turn right and proceed to Ballroom C/D.



## Welcome to the 80<sup>th</sup> Annual MCEC Conference!



Angie Jasper  
Conference Chairperson  
@and\_daphne\_jaz



Ben Hicks  
MCEC President  
@HicksEducation

We would like to thank you for joining us for the 80th annual Michigan Council for Exceptional Children conference. This marks the 80th year of our existence as a professional organization - a significant and wonderful accomplishment. We continue to move forward as an organization dedicated to leading the change within the field of special education. This conference is one of the primary ways that we provide our members and guests with the most current and effective information to support students with exceptionalities. We would like to thank the presenters who will share their knowledge, expertise, and strategies on a variety of topics. As conference attendees, you are in for a treat, as you will obtain knowledge on diverse topics that you will find helpful in supporting students with exceptionalities. Over the next three days, we will embark on a journey to support MCEC's core purpose: To strengthen the field of education to impact success for individuals with exceptionalities. As our partners in this valuable work, we appreciate your engagement as presenters, participants, colleagues, and learners.

So you might ask, what is there to look forward to over the next few days? A lot! We have an exceptional conference planned just for you. It is our hope that you have a productive learning experience. Whether you are a student who is eager to enter the educational work force, a seasoned veteran hoping to hone your craft, or parents looking for the best supports for your children, the content from our slate of sessions are sure to meet your needs. Additionally, we hope that you make new connections and expand your network of educational professionals that can support you in the future.

Thank you all for what you do for students with exceptionalities throughout our state. MCEC would not be the organization that we are without our loyal members and conference attendees. Please enjoy your time with us over the next three days and plan to attend all of the wonderful events we have scheduled. Continue the discussion and engagement within the conference event app and on Twitter using the hashtag **#MichCEC** and conference slogan **#stillexceptionalat80**.

### MCEC Mission Statement

The mission of the Michigan Council for Exceptional Children is to strengthen the field of education to impact success for individuals with exceptionalities by providing professional development, support and advocacy for children, youth, families, special and general educators.

In addition, the Michigan Council for Exceptional Children assists and provides support to the Council for Exceptional Children (CEC) in all its efforts on behalf of persons with exceptionalities, and to participate in all appropriate governance activities of CEC subject to the general supervision and control of CEC.

Schedule of Events

March 4, 2020

7:30am – 7:00pm	Conference Registration: <i>Center Concourse</i>
8:00am – 9:00am	Continental Breakfast
9:00am – 12:00pm	One Day Workshops
12:00pm – 1:00pm	Lunch
1:00pm – 4:30pm	Workshops Continue
4:30pm – 6:30pm	MAASE/CASE Reception: <i>Imperial Ballroom</i>

March 5, 2020

7:00am – 5:30pm	Conference Registration: <i>Center Concourse</i>
7:30am – 9:30am	Coffee Bar: <i>Exhibit Hall/Ambassador Ballroom</i>
7:30am – 5:00pm	<i>Ambassador Ballroom:</i> Exhibitors, AT Playground, District Recruiters
	<i>Crown Foyer:</i> Poster Sessions, Social Media Lounge
	<i>Center Concourse:</i> CEC Student, Division on Autism and Developmental Disabilities, Division on Career Development and Transition, Division of Early Childhood, Entrepreneurial Classroom, MCEC Membership, Experience Grand Rapids
8:15am – 4:30pm	Breakout Sessions
10:45am – 12:00pm	State of the State Address: <i>DeVos Place: Ballroom C &amp; D</i>
12:00pm – 1:10pm	Lunch (on your own) Exhibitors: <i>Ambassador Ballroom</i>
12:00pm – 12:30pm	Membership Lunch: <i>Pantlind Ballroom</i>
12:30pm – 1:00pm	Annual MCEC Meeting: <i>Pantlind Ballroom</i>
1:10pm – 4:30pm	Breakout Sessions
2:00pm – 3:30pm	Ice Cream Bar: <i>Exhibit Hall/Ambassador Ballroom</i>
4:30pm – 6:00pm	MDE Reception: <i>Ford Ballroom</i>
6:00pm – 7:30pm	Honors and Awards Ceremony: <i>DeVos Place: Ballroom C &amp; D</i>

March 6, 2020

7:00am – 3:30pm	Conference Registration: <i>Center Concourse</i>
7:30am – 9:30am	Coffee and Yogurt Bar: <i>Exhibit Hall/Ambassador Ballroom</i>
7:30am – 2:00pm	<i>Ambassador Ballroom:</i> Exhibitors, AT Playground, District Recruiters
	<i>Crown Foyer:</i> Poster Sessions, Social Media Lounge
	<i>Center Concourse:</i> CEC Student, Division on Autism and Developmental Disabilities, Division on Career Development and Transition, Division of Early Childhood, Entrepreneurial Classroom, MCEC Membership, Experience Grand Rapids
8:15am – 10:25am	Breakout Sessions
10:40am – 11:45am	Keynote – Dr. Jemelleh Coes: <i>DeVos Place: Ballroom C &amp; D</i>
11:45am – 1:00pm	Lunch (on your own)
1:10pm – 3:20pm	Breakout Sessions

Table of Contents

Conference Highlights

State of the State/MDE Town Hall Meeting .....	4
Keynote .....	4
2020 Conference Highlights.....	5
Sponsors/Recognition/Thanks.....	6
General Conference Information.....	7
Exhibitor Information.....	8-9
Honors and Awards/Entrepreneurial Classroom .....	10-15

MCEC Information

MCEC Leadership and Past Presidents .....	16-17
81st Annual MCEC Conference/Future CEC Convention Information.....	18
Michigan Foundation for Exceptional Children/MCEC Campership Scholarships.....	19
Membership Information.....	20-21
Special Interest Divisions.....	22-23
MCEC Student Information .....	24-25

Thursday, March 5, 2020

Thursday Day at a Glance .....	26
Poster Sessions.....	27
Breakout Sessions.....	28-45

Friday, March 6, 2020

Friday Day at a Glance .....	46
Poster Sessions.....	47-48
Breakout Sessions.....	49-60

Presenters/Exhibitors/Sponsors/Advertisers

2020 MCEC Conference Presenters/Exhibitors/Sponsors/Advertisers .....	61-73
---	-------



**State of the State**  
**Thursday • 10:45am to 12:00pm**  
**DeVos Place • Ballroom C/D**



Scott Koenigsknecht



Teri Chapman

Join Dr. Scott Koenigsknecht, Michigan Department of Education, Deputy Superintendent P-20 System & Student Transition Division and Ms. Teri Chapman, MDE Director of the Office of Special Education, for the 2020 State of the State Address. In the presentation, Dr. Koenigsknecht will share the finalized recommendations from the Path Forward work-groups, as well as a time-line and specific actions steps for increasing outcomes for Michigan students with exceptionalities. Please be sure to attend!

**MDE Town Hall Meeting**  
**Thursday • 1:10pm to 2:10pm • Heritage Hill**

Join Teri and her staff from the Office of Special Education for a Town Hall meeting to discuss current issues, and initiatives in special education.

**Keynote**  
**Friday • 10:40am to 11:45am**  
**DeVos Place • Ballroom C/D**

**Breaking the Barriers and Building Bridges**  
**Between Schools and Families: A Social Approach**



In her keynote, Dr. Jemelleh Coes will reflect on her experiences and assumptions when working with people with disabilities and encourage attendees to do the same. She will lead the audience in exploring new possibilities for engagement in order to create a more just society.

Dr. Coes has worked in both the special and general education classroom setting. She is currently a professor in the Institute for Human Development and Disability at the University of Georgia. In this capacity, she teaches and provides field experiences for a variety of students who are interested in working with people with disabilities. Jemelleh provides service to the community through mentoring middle school-aged girls who need additional academic and/or emotional support. She also travels nationally to provide professional learning to educators.

Conference Chair Endorsed

**Highlights**


**Conference Highlights**

**Wednesday**  
MAASE/CASE Reception – 4:30pm-6:30pm – Imperial Ballroom  
**Thursday**  
Coffee Bar – 7:30am-9:30am – Exhibit Hall/Ambassador Ballroom  
Social Media Lounge – 7:30am-4:30pm – Crown Foyer  
State of the State – 10:45am-12:00pm – DeVos Place-Ballroom C/D  
Member Lunch – 12:00-12:30pm – Pantlind Ballroom  
Annual Assembly Meeting – 12:30pm-1:00pm – Pantlind Ballroom  
Afternoon Break – 2:00pm-3:30pm – Exhibit Hall/Ambassador Ballroom  
MDE Reception – 4:30pm-6:00pm – Ford Ballroom  
Honors and Awards Reception – 6:00pm-7:30pm – DeVos Place-Ballroom C/D  
**Friday**  
Coffee and Yogurt Bar – 7:30am-9:30am – Exhibit Hall/Ambassador Ballroom  
Social Media Lounge – 7:30am-4:30pm – Crown Foyer  
Keynote Speaker, Dr. Jemelleh Coes – 10:40am-11:45am – DeVos Place-Ballroom C/D

**Receptions**

<b>MAASE/CASE Reception</b> Wednesday • 4:30pm-6:30pm • Imperial Ballroom  <i>The Michigan Association of Administrators of Special Education (MAASE), our Michigan division of the Council for Administrators of Special Education (CASE) is hosting a reception. All conference participants and invited!</i>  <i>Hors d'oeuvres provided</i> <i>Cash bar available</i>  <i>Sponsored by MAASE</i>	<b>MDE Reception</b> Thursday • 4:30pm-6:00pm • Ford Ballroom  <i>MCEC honors our state Special Education Director, Teri Chapman, and her staff. Come and meet Teri and join in on the fun and sharing of our Thursday learning.</i>  <i>Hors d'oeuvres provided</i> <i>Cash bar available</i>
--	--

**Member Lunch/Annual Meeting**

<b>MCEC Member Lunch</b> Thursday • 12:00pm-12:30pm Pantlind Ballroom   <i>Join us at our MCEC Member Lunch. We are honored to welcome Director of Office of Special Education Programs, Laurie VanderPloeg.</i>  <i>Member Lunch Ticket</i> <i>Must be Presented for Entrance</i>	<b>MCEC Annual Meeting</b> Thursday • 12:30pm-1:00pm Pantlind Ballroom  <i>The Annual MCEC Meeting is open to all conference attendees. Agenda will include:</i> <ul style="list-style-type: none"><li>• Approval of 2019 Minutes</li><li>• Review of Budget</li><li>• Election Results</li><li>• Presentation from International CEC</li><li>• Special Interest Division Updates</li><li>• Progress on MCEC Strategic Plan</li></ul>
---	---

Thank You!

Sponsors

Conference Event Sponsors

Platinum Sponsor  
BS&A Software - Friday Keynote  
Silver Sponsors  
MAASE - Wednesday MAASE/CASE Reception  
McGraw Hill Education - Thursday Honors and Awards  
Bronze Sponsors  
Grand Valley State University - Thursday Coffee Bar/Donut Wall  
Thrun Law Firm - Friday Coffee & Yogurt Bar

Honorable Mention Sponsors

Judy Bottum - Praises, Prizes and Presents  
Central Michigan University  
Deverett and Angie Jasper  
Scott and Denise Smith  
Joni Vernia  
John and Ann Walton

Recognition

Angie Jasper, MCEC President-Elect, Central Michigan University - Conference Chairperson, Conference Planning, Coat Check

Ben Hicks, MCEC President, MAASE/CASE Rep., Charlevoix-Emmet ISD - Conference Convener, Conference Planning, MAASE/CASE Reception

Lydia Moore, Vice President, Farmington Public Schools - Wednesday Workshops, Conference Planning, Volunteers

Ann Walton, MCEC Executive Director - Conference Facilitator, Exhibitors, Conference Planning

Denise Smith, MCEC Executive Associate - Conference Planning, Conference Program, On-Site Registration, Conference Invoicing

Joe DeMarsh, MCEC Membership Coordinator, Ingham ISD - Membership Booth, Honors and Awards Reception, Exceptional Children's Poster Contest, Entrepreneurial Classroom

Joni Vernia, Student MCEC Chapter Advisor, Jackson ISD - Student Activities

Selena Brown, Student MCEC Chapter President, Grand Valley State University - Student Activities

Wendy Minor, Honors and Awards Chairperson, Van Buren ISD - Honors and Awards Reception, Exceptional Children's Poster Contest, Entrepreneurial Classroom

Special Thanks

Coat Check Services - Community Transition Campus, Kent ISD

MCEC Videographer - Jim Yanna, Yanna Video Productions

MCEC Photographer and 80th Annual MCEC Logo Designer - Beth Piehl, Charlevoix-Emmet ISD

Assistive Technology Playground - Kent Intermediate School District and Accessible Learning Environments

Interpreter Services at State of the State, Honors and Awards Reception, and Keynote - Northview Public Schools

Music at Honors and Awards - Jonathon Muir-Cotton Trio

MCEC thanks the staff at: Amway Grand Plaza, DeVos Place, Art Craft, and Blue Water Technologies

General Conference Information

Conference App

Download the 2020 conference app! Go to the app store on your mobile device and search for:  
1. **Crowd Compass Attendee Hub**  
2. Once on the app, search for: **80th Annual Michigan CEC Conference**. And also follow us on Twitter @MichiganCEC, #MichCEC.

Questions/Need Assistance?

Look for the Ask ME signs where conference volunteers are happy to help you.

Continuing Education Offerings

Participants who wish to register for SCECH credits or SW-CE hours MUST check in and out at the SCECH booth to pick up their verification form. There are no fees. As not all sessions are eligible for SW-CEs, look for \*SW-CE hours approved; you may also request a listing at registration. We also offer Certification Maintenance Hours (CMH) for ASHA members to renew their Certificate of Clinical Competence (CCCs). ASHA members must complete the SCECH form and then will be provided a certificate after the conference.

Cell Phones

Out of respect for presenters and other conference attendees, please turn your cell phones off or to vibrate during breakout sessions and conference events.

Hotel Phone and Fax

Amway Grand Plaza – 616.774.2000  
Hotel Guest Fax – 616.776.6489  
Business Center is available for other services for a nominal fee.

Lost and Found

Check in at the CEC Registration Desk for lost and found items.

Experience Grand Rapids

Visit the Experience Grand Rapids kiosk located in the registration area.

Coat Check – Complimentary of Kent ISD - Registration Area (Tips Welcome!)

Thursday – 7:30am to 5:00pm  
Friday – 7:30am to 3:30pm (you may also check your luggage on Friday)

Exhibitors – Ambassador Ballroom

Thursday – 7:30am to 5:00pm  
Friday – 7:30am to 2:00pm

Coffee/Breaks – Ambassador Ballroom

Thursday – 7:30am to 9:30am – Coffee Bar/Donut Wall  
Thursday – 2:00pm to 3:30pm – Ice Cream Bar  
Friday – 7:30am to 9:30am – Coffee/Yogurt Bar





## Exhibitors – Ambassador Ballroom

**Thursday • 7:30am to 5:00pm**

**Friday • 7:30am to 2:00pm**

Adrian Public Schools  
Alt+Shift  
AT Playground  
Autism Centers of Michigan  
BRAINS  
CCRESA Office of Innovative Projects  
CEC Book Store  
Celebrate Hope, LLC  
Central Michigan University  
Children's Speech & Language Teletherapy, Inc.  
Concordia University - Ann Arbor  
Deaf Blind Central: Michigan's Training and Resource Project  
Discovery Toys  
Eastern Michigan University  
Grand Canyon University  
Grand Rapids Public Schools  
Grand Valley State University  
Kent ISD  
Lansing School District  
McGraw Hill Education  
Michigan Association of Administrators of Special Education (MAASE)

Michigan Autism Conference  
Michigan Department of Education - Low Incidence Outreach  
Michigan Developmental Disabilities Council  
Michigan State University, Counseling, School Psychology and Special Education  
Ottawa Area ISD - Parent Advisory Committee  
Pick-a-Stic  
Praises, Prizes and Presents  
Sarah Rebekkah Hunt - Author  
Special Education Mediation Services  
SpEdTrack  
St. Joseph County ISD  
STAR Autism Support  
START Project  
The Family Center for Children and Youth with Special Health Care Needs  
Total Spectrum  
Wayne-Westland Community Schools  
Wexford-Missaukee ISD

## Get Your Puzzle Pieces Stamped – Win Prizes!

**Thursday • 7:30am to 5:00pm**

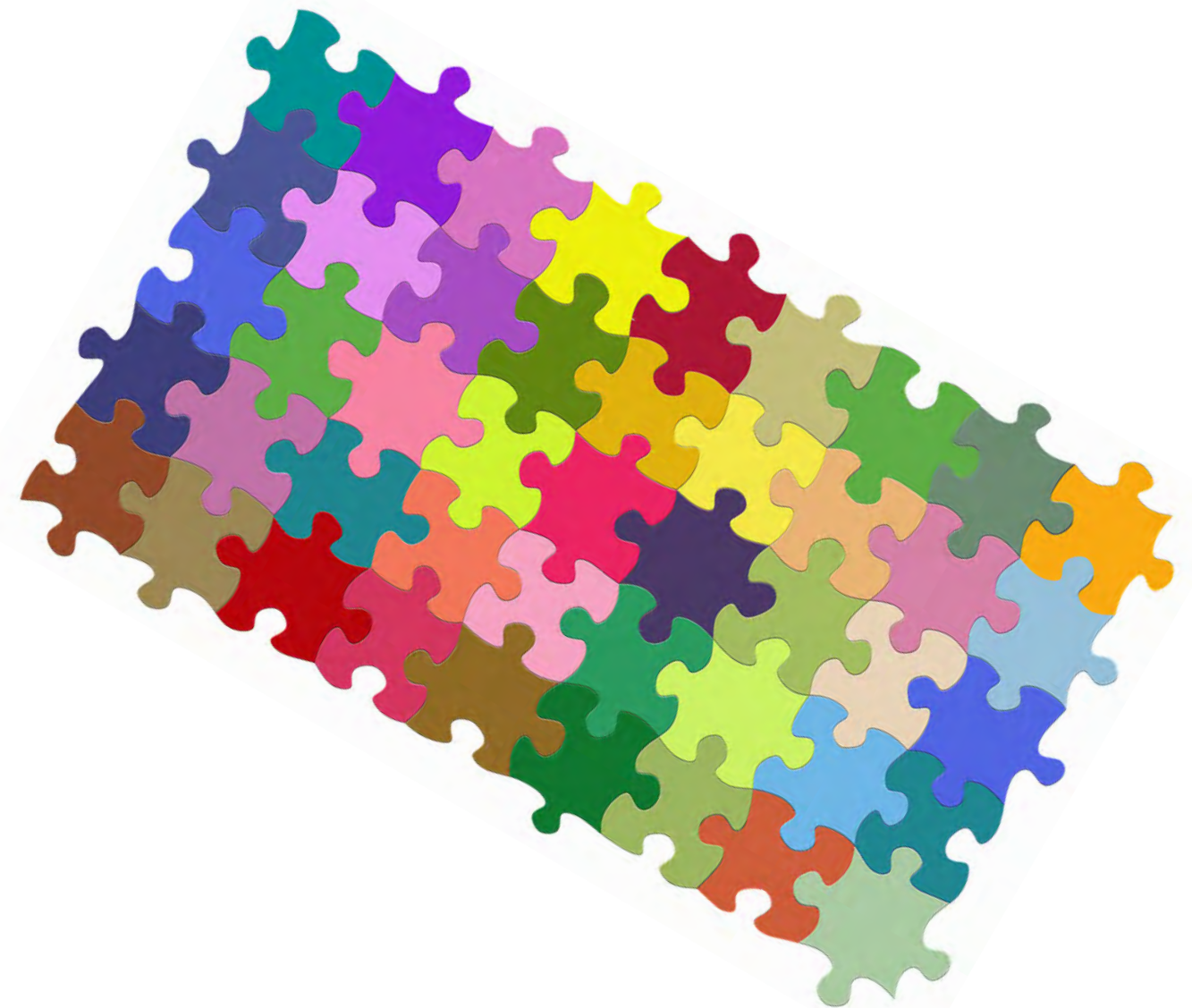
**Friday • 7:30am to 2:00pm**

Conference participants are encouraged to visit the exhibitors in the Ambassador Ballroom.

All conference participants will receive a puzzle handout in the conference materials. If you have at least 20 pieces of the puzzle stamped, you are eligible to win prizes donated by the exhibitors. Get stamps on all exhibitor spaces and you have TWO chances to win! Drawings will be held Thursday afternoon and Friday morning – watch the Drawing Board in the Registration Area for winners!

When you have collected your stamps, be sure to put your name on the puzzle and turn it into the CEC Student Booth located in the Center Concourse near the Registration Area.

Good Luck!!



### Please Join Us!

**Drawings for items donated by Exhibitors will take place throughout the day on Thursday and Friday**

#### Thursday

**Coffee Bar/Donut Wall**  
7:30am to 9:30am



Sponsored by:  
Grand Valley State University

#### Thursday

**Ice Cream Bar**  
2:00pm to 3:30pm



#### Friday

**Coffee and Yogurt Bar**  
7:30am to 9:30am



Sponsored by:  
Thrun Law Firm



## Honors and Awards Reception

Thursday • 6:00pm to 7:30pm • DeVos Place - Ballroom C/D  
Hors d'oeuvres served at 6:00pm • Awards presented at 6:30pm



Cheryl Borowski  
Dr. William Cruickshank  
Professional Service

Cheryl Borowski has made significant and countless contributions to the education of children with exceptionalities in Michigan. Strong collaborative leadership skills, a worker leader and a consummate volunteer, tireless efforts to support the successes of young people with disabilities; these are all key statements used to describe Cheryl Borowski, the 2020 Dr. William Cruickshank Professional Service Award winner. This award was named for a pioneer in the field of special education in Michigan, and is presented to individuals who have made significant contributions to the education of children with exceptionalities. These qualities epitomize Cheryl's stellar career in service to children with exceptionalities and their families in Michigan. Recently retiring after 22 years as the St. Clair County RESA Coordinator of Compliance, Planning and Accountability, Cheryl was instrumental in fostering the development of the directors and supervisors in the county.

She is a long standing member of the Michigan Association of Administrators of Special Education (MAASE) serving in a leadership role on numerous committees and projects including: Monitors Community of Practice, Summer Institute Committee and the Professional Development Committee. Cheryl is the past president of the Michigan Council for Exceptional Children and the current president of the Michigan Foundation for Exceptional Children (MFEC), working tirelessly to organize the awarding of scholarships for young people with disabilities after they leave high school. Beyond all of these stellar achievements, Cheryl is described by all who know her as a valued friend and colleague. Her welcoming nature and professional ethics ensures that everyone she works with feels included and valued. Cheryl participates freely and fluidly in monitoring activities from every region of the state, and has built a statewide reputation as knowledgeable, dedicated and trustworthy. She is described by all as an exemplar of skillful support and advocacy for students with disabilities. Cheryl's honesty, compassion and dedication reflect in her work as a leader and colleague, and she has made all those she encounters better at their craft. Cheryl's impact on the field of special education will continue for many years to come.



David and Deb Hadley are the parents of Christian Hadley, a 16 year old young man with emotional and cognitive impairments and a medical condition called bilateral gray matter heterotopia. Christian attends Kalamazoo RESA's Valley Center School. Both parents are extremely involved with the school and supporting Christian's education. They actively participate in Parent Education Nights, School Awards or Celebration events and any meeting related to supporting Christian's emotional or behavioral needs at school. It is common to see David and Deb mulling around after an event has dismissed, supporting other parents through communicating their own personal experiences. David and Deb have always sought outside resources for Christian to provide a full spectrum of support for his special needs and they willingly bring these perspectives and knowledge to the school staff. This supports a collaborative approach during IEP meetings and parent-teacher conferences. In addition, they have made it a priority to engage Christian with social activities including swimming lessons, TOPS soccer and Special Olympics. Through their support of the school, collaboration with professionals and initiative to involve Christian socially, David and Deb are truly exceptional parents.



Dave and Deb Hadley  
Exceptional Parents  
of the Year



Stacy Lantzy  
Ingham ISD  
Dr. William C. Morse  
Teacher of the Year

Stacy Lantzy is a special education teacher in a classroom for students with severe multiple impairments at Heartwood School in Ingham County. Her students range in age from 2.5 to 5 years old. Stacy is passionate, innovative, driven, and committed to making a difference with every student and family that enters her classroom.

Stacy also goes above and beyond her role as a teacher and MOVE trainer. MOVE® combines the individuals' present abilities with an instructional process during motivational activities to help the individual improve their mobility skills of sitting, standing, walking, and transitioning - leading to improved health, independence, dignity and inclusion of the individual in the family and community.

Be sure to check out the MOVE presentation on Thursday at 2:20pm in Grandview B/C.

## Honors and Awards Reception

Thursday • 6:00pm to 7:30pm • DeVos Place - Ballroom C/D  
Hors d'oeuvres served at 6:00pm • Awards presented at 6:30pm



Amy Hoch  
Central Michigan  
University  
Dr. Charles Van Riper  
Outstanding  
College Student

Amy Hoch is a student at Central Michigan University, majoring in Special Education (focusing in Cognitive Impairment K-12 and English 6-12). She has received several academic honors.

Amy has been involved in many organizations that have allowed her to utilize her special education background to excel students and those with disabilities in reading, math, and many other subjects. Her diversity in education has been furthered as a substitute teacher in a variety of settings.

Her work ethic extends far beyond the classroom, as she assists individuals with disabilities throughout the campus and community. For example, she volunteers in after-school programs and is a caregiver for a high school student with cerebral palsy and autism. In addition, she serves as a family mentor during new student orientation and supports her fellow classmates. She is an active member of Leadership Safari, St. Jude up till dawn, Kappa Delta Pi, CMU SCEC, and the CMU Honors Program.

Amy demonstrates compassion, drive, determination, teamwork, and exceptional abilities to relate to students and families. Her work ethic sets the highest standard and she has the capacity to be a great leader in the field of education.



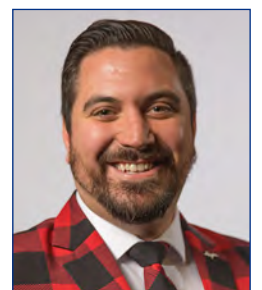
Zoe Bruyn  
Stir It Up Bakery  
Grand Rapids  
Dr. Dawn Gallup  
Honor Recipient  
Business & Employment

Zoe Bruyn is the founder and owner of Stir It Up Bakery of Grand Rapids, a premium bakery that employs adults of all abilities at a wage that is not only equal, but competitive. After firsthand experience with watching young adults with disabilities struggle with finding stable and meaningful employment, Zoe decided that she wanted to cultivate change to close this gap and provide opportunities for individuals with disabilities. Stir It Up is distinctly serving the population of adults with cognitive exceptionalities by turning away from a charity mindset and advocating for equality and inclusion. Intentionally named "Stir It Up", Zoe intended her bakery to stir up society's perceptions and stereotypes of employing adults with disabilities. With the goal of equality, the high standards Zoe holds for each of her bakers is intended to benefit their development of professional skills. Zoe writes, "We believe everyone is entitled to acceptance, a sense of belonging, and an opportunity to develop skills so that they can become a contributing member of the community." She is a true example of what it means to "see the person." Perhaps most special about Zoe is her model of empowerment. Treating her employees as sincerely valued assets of the company is a consistent theme of her leadership. Her employees were not offered their positions because it was a nice thing to do—they are employed with Stir It Up because what they bring to the team is valuable.



Bill Digneit is an assistant professor with Northern Michigan University, in Communication and Media Studies, and is also the Director of the Thomas Fine Arts Theatre on the University's campus. Bill is the co-owner of Double Trouble Entertainment, a Michigan based entertainment and production company focusing on nightclub design and outdoor events.

Bill also is part owner of DIGS Gastropub in Marquette, Michigan. Furthermore, Bill is the current production manager for the annual LDI Conference Program (including LDInstitute and LDIntensives) in Las Vegas and also for LDI Mexico. He has been working in production management with LDI for over 10 years. Bill consistently demonstrates great passion and commitment to ensuring individuals with exceptionalities have equal access to community events and theatre performances.

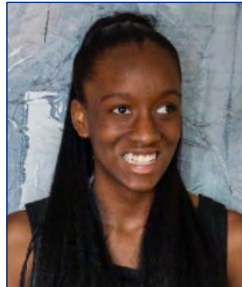


William Digneit  
Theater for All  
Northern Michigan  
University  
Dr. Dawn Gallup  
Honor Recipient  
Community Access  
and Engagement

## Honors and Awards Reception

Thursday • 6:00pm to 7:30pm • DeVos Place - Ballroom C/D  
Hors d'oeuvres served at 6:00pm • Awards presented at 6:30pm

### Congratulations 2020 Yes I Can! Award Winners



**Ciara Williams**  
Transition  
Portage Central  
High School  
Portage Public Schools

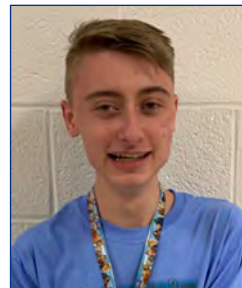
Ciara Williams is a senior at Portage Central High School. She became visually impaired at the age of 2 as a result of a traumatic brain injury. However, this has not stopped her from gaining independence and accessing community agencies to assist her. She participated in a training opportunity at the Bureau of Services for Blind Persons (BSBP) training center. Ciara participated in a four-day "No Barriers" leadership training in Northern Michigan during the winter of 2019. The motto for this training was "What's Within You is Stronger Than What's in Your Way." Ciara regularly embodies that motto with her enthusiastic and encouraging spirit towards others.

Ciara also participated in vocational training and work experiences at the Disability Network this past summer, which have made a tremendous positive impact on how she perceives her future. During this experience, she was an intern at Disability Network as part of the summer Advocacy Academy program. She was part of a group that did research for a need in the disability community and developed an advocacy project around that need. The need that Ciara identified was making mental health resources more readily available. Her leadership and positive attitude encourage others to develop skills to support their transition journey into adulthood. Ciara's strength and determination to be as independent and successful as possible truly makes her an outstanding individual.

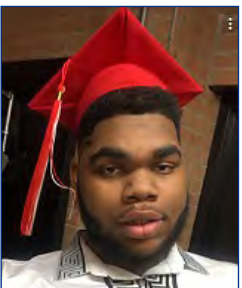


Jacob Stoner is a twelfth-grade student at Port Huron Northern High School. He has a physical impairment due to a stroke at birth with a diagnosis of cerebral palsy. Jacob is a member of the school marching band, symphonic band and drama club. He is also a member of the National Honor Society. As a member of the National Honor Society, he has frequently volunteered at the soup kitchen, numerous recycling and canned food drives, the elementary school and special needs carnival. Jacob is also an active member of the Leadership Club. Within this club, he has volunteered at the Salvation Army and worked many blood drives at the school. For the past two years, Jacob has been a peer mentor at the annual freshman orientation activity.

The impact of Jacob's accomplishments are felt by every peer, staff and community member Jacob encounters. Not only does he have a sincere desire to help people, but his positive attitude is infectious. He is a role model that can show younger students the meaning of determination, hard work and a positive attitude.



**Jacob Stoner**  
School and  
Community Activities  
Port Huron Northern  
High School  
Port Huron Public Schools



**Ju'Shaun Thomas**  
Transition  
Oak Park High School  
Oak Park School District

Ju'Shaun Thomas is a senior at Oak Park high School who happens to have a learning disability, but he doesn't let that define him. Ju'Shaun is a very caring, self-motivated, and driven student. He is very determined to be successful both in and out of the classroom, showing thoughtfulness and leadership. Ju'Shaun is adamant about speaking up for what is right and never shies away from advocating for himself and others. His academic achievements and involvement in extracurricular activities are truly an outstanding feat. In February, 2019, Ju'Shaun began developing his own T-Shirt line entitled, "Chubby Champs" geared toward students with weight challenges. In May, 2019, he applied and was accepted to Michigan Rehabilitation Services Entrepreneurial Program, which provided him with extensive training and funding toward developing his own apparel line. Ju'Shaun is currently enrolled in the Marketing Program through Oakland Schools Technical Campus. He is on track for graduating in June, 2020, and is a wonderful example of both a strong leader and a scholar.

## Honors and Awards Reception

Thursday • 6:00pm to 7:30pm • DeVos Place - Ballroom C/D  
Hors d'oeuvres served at 6:00pm • Awards presented at 6:30pm

### Congratulations 2020 Yes I Can! Award Winners



**Tommie Taylor**  
Self-Advocacy  
Eriksson Elementary  
Plymouth Canton  
Community Schools

As a student with autism, Tommie Taylor has had his share of social and emotional difficulties. As a kindergartner, first and second grader, Tommie required significant interventions to help him deal with his perfectionism, his refusal to use the school bathroom, and his emotional regulation.

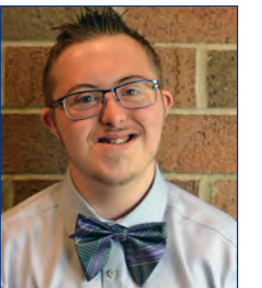
Tommie has grown to now requiring minimal special education supports, and remains in a general education 5th grade class.

Tommie founded the Autism Awareness Committee (AAC) at his school. The purpose of the committee is to increase autism awareness, with the goal to reduce bullying for everyone. Tommie is proud to have autism. His confidence and acceptance of who he is radiates when he talks about autism, especially to his neuro-typical peers. Tommie's ability to speak openly about his autism helps dispel myths and fears other elementary students may have about people with disabilities. He is a role-model who encourages others to be comfortable with who they are, even if not lucky enough to have autism, like him.



Lucas Jackett was born with Down Syndrome and is visually impaired. His visual impairment and Down Syndrome have delayed his academic development in all subjects. Despite Lucas's challenges, he demonstrated very early that he was determined to be independent. Lucas demands to be treated like everyone else.

Lucas has been very active in World Down Syndrome Day where he visits many classrooms at the local elementary school and reads a book about himself. He is a force to be reckoned with when he decides to take on a new challenge. Lucas's work ethic is respected by both his teachers and his peers. He is very popular, and does not discriminate when extending friendship. His visits to the elementary classrooms help the students understand that differences are okay. With each of Lucas's accomplishments he has become more confident to set new goals.



**Lucas Jackett**  
Self-Advocacy  
Millington High School  
Millington Community  
Schools



**Miguel Luna-Perez**  
Transition  
Michigan School  
for the Deaf

Miguel Luna-Perez is a student at Michigan School for the Deaf. He is a dedicated, hard working student and role model for his peers. He has participated in the Genesee Career Institution (GCI) and has excelled in the Construction Trades program where he will be able to transfer his skills to the workforce. Miguel was on the certificate of completion track when he first entered Michigan School for the Deaf. He was given full immersion into American Sign Language and content became easier for him to understand and learn, hence, he was moved to a diploma track. He is currently enrolled at Genesee Career Institute (GCI) focusing on a future in construction. He will graduate with a diploma from Michigan School for the Deaf in June, 2020. He would like to attend South West Collegiate Institute for the Deaf located in Big Spring, Texas.



## Honors and Awards Reception

Thursday • 6:00pm to 7:30pm • DeVos Place - Ballroom C/D  
Hors d'oeuvres served at 6:00pm • Awards presented at 6:30pm

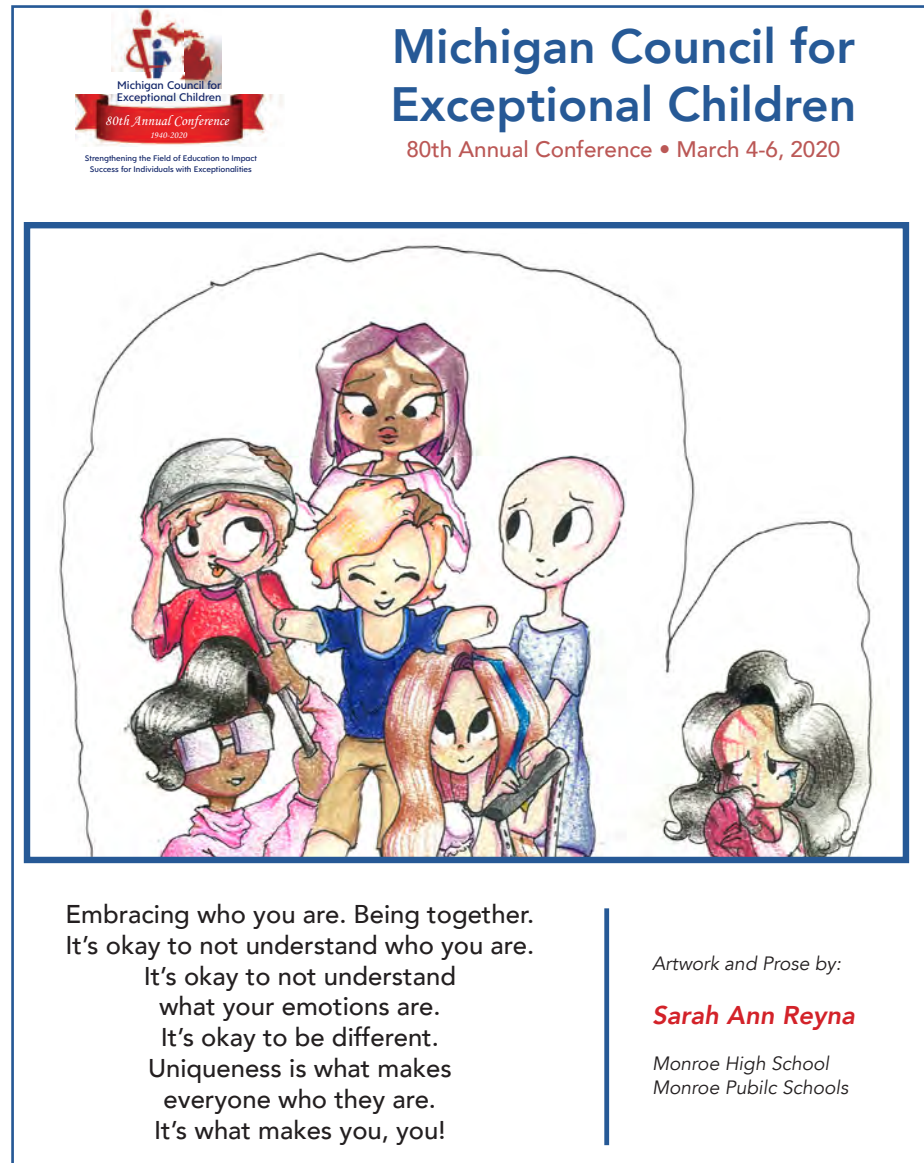
### Congratulations 2020 Poster Contest Winner



Sarah Reyna  
Artist and Prose  
Monroe High School  
Monroe Public Schools

Sarah Reyna is an 11th grade student at Monroe High School in Monroe, Michigan. She began her high school career in the local based classroom as a freshman with many emotional difficulties. Her freshmen year was not very good for her. Sarah struggled both emotionally and academically.

Sarah has now found her wings! She is succeeding academically and is a very talented artist, with a keen eye for art. Her work has been displayed at the Monroe County Fair and in the high school display cases. She has four current pieces on display that received a first place award at the county fair this past summer. Sarah is a very creative, caring, and sensitive young lady. Sarah can light up a room and she is loved by all of her peers and staff. She is happy to see you and will give you a fantastic, tight hug if you are feeling down. The entire staff of Monroe Public Schools and Monroe County ISD are very proud of Sarah and all that she has accomplished. Congratulations, Sarah!



## Honors and Awards Reception

Thursday • 6:00pm to 7:30pm • DeVos Place - Ballroom C/D  
Hors d'oeuvres served at 6:00pm • Awards presented at 6:30pm

### Congratulations 2020 Entrepreneurial Classroom

One of the highlights of the MCEC Conference is the inclusion of the entrepreneurial Classroom. This honor is awarded to a classroom that prepares students to enter the community not only in their ability to make and sell a product, but also in the development of their social skills.

MCEC would like to like to congratulate Lincoln Park Public Schools - Mixer Institute of Transition, "Mixer Market Stand" on winning the 2020 Annual Entrepreneurial Classroom Award! Be sure to stop by their booth located in the Center Concourse in the Registration area on Thursday and Friday of the conference.



Mixer-Made products are created by students with autism. The idea is to grow, create and sell. The products are all-natural and produced from the Mixer Garden. They started in the garden, designing the landscape and planting. Mixer-Made products include homemade liquid soaps, bar soaps, deodorants, cleaning products, body scrubs, body sprays, lotions, lavender pouches, herb necklaces, essential oil diffuser jewelry made out of wood (grown on our property), Mixer-Made baskets, flowers, ornaments, headache balm, roll oils, chap sticks, live herbs, bath bombs, dog treats, candles, dried lavender, potpourri, pillows filled with lavender, and more.

# MCEC Leadership

## Michigan CEC Board of Directors

Ben Hicks, Charlevoix-Emmet ISD.....	President
Angie Jasper, Central Michigan University.....	President-Elect, CEC RA Rep
Lydia Moore, Farmington Public Schools.....	Vice President
Nichole Moore, Wayne-Westland Community School District.....	Past President
Mary Bradley, Muskegon Area ISD.....	Secretary
Andy Claes, Delta-Schoolcraft ISD.....	Treasurer
Joe DeMarsh, Ingham ISD.....	Membership Coordinator, CEC RA Rep
Mark King, Retired - Ottawa Area ISD.....	Children's Action Network Coordinator
Joni Vernia, Jackson County ISD.....	MCEC Student Chapter Advisor
Shalika Robie, Wayne RESA.....	SEAC Representative
Matt Koekkoek, Newaygo County RESA.....	Member at Large, OEAA Representative
Amanda Brennan, Plymouth-Canton Community Schools.....	Member at Large
Candi Bush, Family Center for Children and Youth.....	Member at Large
Amanda McNamara, Plymouth-Canton Community Schools.....	Member at Large
Lauren Ringle, Public Schools of Petoskey.....	Member at Large
Carolyn Smith-Gerdes, Muskegon Area ISD.....	Member at Large
Charles Thomas.....	MDE Liaison
Ann Walton.....	Executive Director
Denise Smith.....	Executive Associate

## Michigan Special Interest Division Contacts

Kindy Segovia, Kent ISD.....	TAM
Ben Hicks, Charlevoix-Emmet ISD.....	CASE/MAASE
Kimberly Krug, Wayne RESA.....	DADD
Christina Roy, Oakland Schools.....	MiDCDD
Cheryl Brown, Ann Arbor Public Schools.....	DCDT
Precios Armstrong, Jackson County ISD.....	DDEL
Kathryn Bourbina, Monroe ISD.....	DEC
Monica Harris, Grand Valley State University.....	TED

## Michigan CEC Student Board

Selena Brown, Grand Valley State University.....	President
Kassey Kytola, Northern Michigan University.....	President-Elect
Meredith Filter, Grand Valley State University.....	Secretary/Treasurer
Amy Hoch, Central Michigan University.....	CAN Coordinator
Katie Raby, Central Michigan University.....	Membership Chair

## Michigan Foundation for Exceptional Children

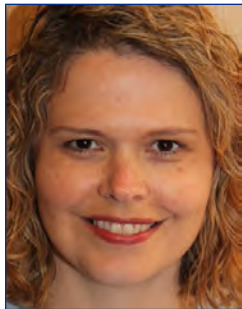
Cheryl Borowski.....	Chair
Wendy Minor.....	Vice-Chair
Concetta Lewis.....	Secretary
Nichole Moore.....	MCEC Liaison
Mary Wiese.....	Treasurer
Cheryl Brown.....	Member at Large
Matthew Korolden.....	Member at Large
Sharon LaPointe.....	Member at Large

# MCEC Past Presidents

Nichole Moore.....	2018-2019	Joseph Noorthoek.....	1970-1971
Concetta Lewis.....	2017-2018	James Edward Keller.....	1969-1970
Ann Walton.....	2016-2017	Paul Mason.....	1968-1969
Laura LaMore.....	2015-2016	James Alvin Hutchinson.....	1967-1968
Joe DeMarsh.....	2014-2015	Walter Wend.....	1966-1967
Mary Meldrum.....	2013-2014	John Mader.....	1965-1966
Wendy Minor.....	2012-2013	Howard Morgan.....	1965-1966
Dawn Gallup.....	2010-2012	Charles Mange.....	1964-1965
		Robert St. Germain.....	1963-1964
		June England.....	1962-1963
		Harry Butler.....	1961-1962
Cheryl Borowski.....	2009-2010	Richard Guenther.....	1960-1961
Tina Atkins-Dean.....	2008-2009	Paul Voelker.....	1959-1960
Mark Francis.....	2007-2008	Marvin Beekman.....	1958-1959
Janis Gaubatz.....	2006-2007	Marguerite Rapson.....	1957-1958
Laurie VanderPloeg.....	2005-2006	Mildred Walton.....	1956-1957
Suzanne Shellady.....	2004-2005	Bruce Siders.....	1955-1956
Judy Pazol.....	2003-2004	Mable Giszczak.....	1954-1955
Chris VanderWall.....	2002-2003	Stephen Partington.....	1952-1954
Kathy Barker.....	2001-2002	Merry Maude Wallace.....	1951-1952
Linda McCrea.....	2000-2001	Irett Ferris.....	1950-1951
Jim Randall.....	1999-2000	Alfred Thea.....	1949-1950
Frances Mueller Paris.....	1998-1999	Laura Wingerts Zahn.....	1947-1949
Michael Dombrowski.....	1997-1998	Doris Klaussen.....	1946-1947
Lucian Parshall.....	1995-1997	John Tenny.....	1943-1946
Gene Kyle.....	1994-1995	Doris Klaussen.....	1942-1943
Chris Clinton-Cali.....	1993-1994	Alice Metzner.....	1941-1942
Barbara Senninger.....	1992-1993		
Hugh Reid.....	1991-1992		
Todd Bingaman.....	1990-1991	Joseph Cauffman.....	1940-1941
Shirley Young.....	1989-1990	Violet Foster.....	1939-1940
Paul Michaelson.....	1988-1989		
Mary Spessard.....	1987-1988		
Leonard Rezmierski.....	1986-1987		
Mary Campbell.....	1985-1986		
Chuck Achterhof.....	1984-1985		
Marylyn Lake.....	1983-1984		
Arnold Larson.....	1982-1983		
Janet Kline.....	1981-1982		
Robert Luce.....	1980-1981		
Carolyn Benscoter.....	1979-1980		
Christopher Young.....	1978-1979		
Larry Campbell.....	1977-1978		
Tom Caldwell.....	1976-1977		
Gary Navarre.....	1975-1976		
Casimir Schesky.....	1974-1975		
Robert Crump.....	1973-1974		
Leonard Luedtke.....	1972-1973		
Mildred Williams.....	1971-1972		



# 81st Annual MCEC Conference



Dear Michigan CEC Conference Attendees:

I want to take this opportunity to personally invite you to the 81st Annual Michigan Council for Exceptional Children Conference, to be held on March 3 - 5, 2021 at the Amway Grand Plaza in Grand Rapids, Michigan. Next year's conference promises to be an inspirational and educational experience for all professionals, parents, and students working with or on behalf of students with exceptionalities. Each year, the conference hosts over 1,000 participants from across the state of Michigan who are looking to network, grow professionally, and learn strategies and tools to implement in their practice.

On March 3, 2021, we will offer pre-conference Wednesday Workshops. These learning opportunities are designed to allow participants to engage in a relevant topic area for a full day. On March 4-5, we will offer a wide array of breakout sessions presented by professionals in the field of special education, as well as family members and individuals with exceptionalities. We will also offer plenary sessions including a Keynote and update from the Michigan Department of Education.

You do not want to miss this professional development opportunity! Not only will you build your professional practice - you will have the opportunity to earn credits toward the renewal of your educator certificate or professional license. Please mark your calendars now and plan to attend Michigan's premiere educational conference again in 2021. For more information visit [michigancec.org](http://michigancec.org).

Thanks for coming and we will see you next year!

Respectfully,

Lydia Moore, MCEC Vice President  
2021 Conference Chair

## Future CEC Conference Information

### Michigan CEC Conferences

#### 81st Annual Conference

March 3 - March 5, 2021, Grand Rapids

#### 82nd Annual Conference

March 2 - March 4, 2022, Grand Rapids

### National CEC Conventions

March 3 - March 6, 2021

Baltimore, Maryland

January 15 - January 19, 2022

Orlando, Florida

## MCEC's Partnering Conference Information

**START** • April 27, 2020, Kellogg Center, East Lansing

**ASD** • October 8-9, 2020, Radisson Plaza Hotel and Suites, Kalamazoo

**MAASE Summer Institute** • August 9-12, 2020, Grand Traverse Resort, Traverse City

**Mathematics: Reaching All Learners Together (MRALT)** • October 19 2020, Wayne County Community College – Downriver Campus

**Upper Peninsula Special Education Conference** • October 8-9 2020, Northern Michigan University, Marquette

**Assist TechKnow** • October 15-16, 2020, Kent ISD, Grand Rapids

# Michigan Foundation for Exceptional Children



Dear MCEC Conference Attendees:

I wanted to take a moment to thank you for your role as educators, service providers, student educators, and parents in helping students with exceptionalities to progress in their attainment of skills in preschool, elementary and ultimately secondary education programs, which will help to prepare them for their lives as engaged, and productive adults in their communities. As you know, many students with exceptionalities desire to pursue postsecondary education or training, but need financial support to do so. This is where the Michigan Foundation for Exceptional Children (MFEF) comes into play.

The MFEF was established by and received an initial endowment of funds from the Michigan Council for Exceptional Children (MCEC) in 2001 to provide scholarship assistance to students with exceptionalities who desire, and have been accepted to pursue post-secondary education or training programs after exiting from secondary education. MFEF funds these scholarships from interest on the initial MCEC endowment and from donations from the Michigan Association of Administrators of Special Education's silent auction, corporations, parents, and staff and friends of MFEF. We are proud to report that since 2001 we have awarded \$129,000 to 114 students.

MFEF could use your help! If you would like to make a tax deductible contribution where 100% of the donation will go to student scholarships, please make your check payable to:

Michigan Foundation for Exceptional Children  
c/o Cheryl Borowski  
MFEF Chair  
93780 Siebert Ave  
Marcellus, MI 49067

## MCEC Campership Scholarships



This is an opportunity for students to apply for funding (up to \$250) to attend a summer camp in Michigan. These camperships are open to students with an active Michigan IEP, in need of financial support, and who would otherwise not have an opportunity for a summer camp experience.

Visit our website:

[www.MichiganCEC.org](http://www.MichiganCEC.org) to apply

Applications must be electronically submitted by  
March 27, 2020

Notifications will be mailed by April 30, 2020

Questions?  
Please contact us at:  
[camperships@michigancec.org](mailto:camperships@michigancec.org)

Top 10 Reasons Why YOU Should Belong to CEC

- 10
- Keep Up-To-Date on Special Education Issues, Trends and Findings: *TEACHING Exceptional Children* is the only classroom-oriented magazine reporting the latest practical methods, materials, and programs for teaching children with exceptionalities. *Exceptional Children* gives you an early look at the significant findings and trends in special education.
- 9
- Save Big Bucks: Attend the CEC Annual Convention and Expo, and you'll save the cost of your membership... and then some! Plus, as a member you can take advantage of professional liability and other insurance programs, discounts on educational resources, financial services, and much more.
- 8
- Network, Network, Network: Dues include membership in your state/provincial CEC (and local chapter where applicable). Get to know other experts in your community, your state/province, nationally, and around the globe.
- 7
- Increase Your Professional Profile: Explore career options on-line in the largest job bank on the Internet devoted exclusively to special education professionals. Publish in CEC's journals. Share your expertise at CEC's highly respected conferences and symposia. Receive recognition for your contributions through CEC's award program.
- 6
- Add to Your Expertise: Join any—or all!—of CEC's 18 special interest divisions to increase your knowledge and become more deeply involved in your profession.
- 5
- Get the Resources You Need at Prices You Can Afford: The CEC Catalog is crammed with resources and materials specifically for special educators. Members save up to 30%!
- 4
- Add New Leadership Skills to Your Resume: You don't have to be a long-term member to get involved. New members are encouraged to participate in your local chapter or state/provincial CEC activities, join a committee, run for office or get involved in a variety of ways at all levels of CEC.
- 3
- Access to Insurance Benefits: More than a dozen life, health, auto & home, and professional liability insurance plans and protection services!
- 2
- Influence the Profession: Add your voice to advance the policies that support children with exceptionalities and the professionals who serve them. Just a few of the issues for which CEC has advocated include reduction of special education paperwork, full funding for special education, and preserving special education research programs.
- 1
- Improve the Educational Success of Individuals with Disabilities: Isn't that why you became a special educator in the first place?

You can become a member of National and MCEC for as little as \$65 per year, and it's payable in 3 monthly installments!

CEC'S EXCEPTIONAL MEMBERSHIP OPTIONS

YOUR CEC MEMBER BENEFITS INCLUDE:	PREMIER*	FULL*	BASIC*
THE MOST WIDELY READ JOURNALS & PUBLICATIONS			
FREE \$250,000 professional liability insurance policy	✓		
TEACHING Exceptional Children (TEC) online (6x/year)	✓	✓	✓
TEC print journal (6x/year)	✓	✓	
Exceptional Children (EC) online (4x/year)	✓	✓	
EC print journal (4x/year)	✓		
One FREE ebook from CEC's bookstore	✓		
Up to 30% savings on publications and resources	✓	✓	✓
THE LATEST NEWS AND INFORMATION			
Special Education Today e-newsletter	✓	✓	✓
Policy Insider e-newsletter	✓	✓	✓
NETWORKING AND PEER SUPPORT			
Eligibility to participate in the CEC Mentoring Program	✓	✓	✓
The online All-Member Forum	✓	✓	✓
Access to membership in Special Interest Divisions (optional and additional dues apply)	✓	✓	✓
FREE Membership in one Special Interest Division (additional charge applies for any division with dues above \$35)	✓		
Membership in your state or provincial unit (U.S. and Canada only)	✓	✓	✓
Access to the CEC Career Center	✓	✓	✓
Eligibility to serve as a CEC volunteer leader	✓	✓	✓
Eligibility to vote in CEC's all-member election	✓	✓	✓
PROFESSIONAL DEVELOPMENT			
FREE CEC recorded webinar (2 for premier and 1 for full membership)	✓	✓	
Member savings on professional development products & services	✓	✓	✓
SPECIAL DISCOUNTS			
Preferred member discounts on office and school supplies	✓	✓	✓
Preferred member pricing on insurance programs	✓	✓	✓
Your investment	\$205	\$115	\$65

\* Students are eligible for a 20% discount on all membership levels

MEMBERSHIP PACKAGES:

**School District Package (\$1,300):** This package includes one administrator (Premier Membership with CASE Division Membership) plus five teachers/professionals (Basic Membership) and is designed for purchase at the school level to support and engage classroom teachers. This package offers enhanced benefits such as two convention registrations and three webinars, which are all included in the package price, a savings of more than \$300!

**International Discount (\$50):** For individuals residing in developing countries, as identified by the World Bank Model, may join the Full Membership at a reduced rate.



Join or renew your membership in CEC during this conference and get \$10 off your annual rate (discount code: CECMember2020) AND you'll be eligible to win a FREE two-day registration to our 2021 MCEC Conference!

Learn more about CEC at the MCEC Membership Table or ask anyone wearing a CEC Member ribbon.



## Special Interest Divisions

### Michigan Division for Early Childhood

#### Stop by our table in the Center Concourse/Registration Area – Thursday and Friday

The **Michigan Division for Early Childhood (MiDEC)** is your source for information, resources, and guidance related to young children with special needs and their families. MiDEC is dedicated to promoting policies and evidence-based practices to support families and enhance the optimal development of all children. MiDEC encourages and promotes professional growth and quality practices to support young children with exceptional needs and their families. Join us to learn about the many benefits and activities of MiDEC.

### Division on Career Development and Transition

#### Stop by our table in the Center Concourse/Registration Area – Thursday and Friday

The **Division on Career Development and Transition (DCDT)** focuses on the career development of individuals with disabilities and/or who are gifted and their transition from school to adult life. Members receive the journal **Career Development for Exceptional Individuals** and the **DCDT Network** newsletter. The mission of DCDT is to promote national and international efforts to improve the quality of, and access to, career/vocational and transition services, increase the participation of education in career development goals, and to influence policies affecting career development and transition services for persons with disabilities.

### Division on Autism and Developmental Disabilities

#### Stop by our table in the Center Concourse/Registration Area – Thursday and Friday

The CEC **Division on Autism and Developmental Disabilities (DADD)** is composed of persons committed to enhancing the quality of life of individuals, especially children and youth, with autism, intellectual disabilities and other developmental disabilities. The Division seeks to further the knowledge base of the field, thus ensuring the continued advancement of positive educational and life outcomes for those with autism and developmental disabilities. Joining DADD entitles you to an array of benefits such as:

- National, regional, state, provincial, and local conferences that offer the opportunity for continuing education units (CEU's).
- Opportunities to network with colleagues and leaders in the field of autism and developmental disabilities.
- Acquisition of implementation tools and practical strategies that can be applied in individual settings.
- Receipt of research-based and current publications, including: Education and Training in Autism and Developmental Disabilities, Focus on Autism and other Developmental Disabilities, and DADD Express Newsletter.
- Visit [www.daddcec.org](http://www.daddcec.org) to learn more about this division and ways to get involved.

## Special Interest Divisions

### Division for Culturally and Linguistically Diverse Exceptional Learners

#### Join us in the Ruby Room – Friday 8:15am to 9:15am

The CEC **Division for Culturally and Linguistically Diverse Exceptional Learners (DDEL)** is one of 17 special interest groups of the Council for Exceptional Children (CEC), the largest international professional organization dedicated to improving educational outcomes for individuals with exceptionalities, including students with disabilities and those identified as gifted. DDEL advances educational opportunities for culturally and linguistically diverse learners with disabilities and/or gifts and talents, their families, and the professionals who serve them. It is the only professional organization dedicated exclusively to the concerns of culturally and linguistically diverse exceptional learners. Members receive the journal **Multiple Voices for Ethnically Diverse Exceptional Learners** and the **DDEL Newsletter**.

### Michigan Division for Communicative Disabilities

#### Join us in the Ruby Room – Friday 9:25am to 10:25am

The **Michigan Division for Communicative Disabilities and Deafness (MiDCDD)** is concerned with the well-being, development, and education of infants, toddlers, children, and youth with communication and learning disorders, ranging from mild to profound, and/or who are deaf or hard of hearing. DCDD aims to provide information to professionals and families regarding:

- (a) the development of communication and learning abilities,
- (b) the prevention of communication and learning disorders, and
- (c) evidence-based assessment and intervention practices for individuals with speech, language, learning, and/or hearing difficulties.

### Teacher Education Division

#### Join us in the Ruby Room on Friday - 1:10pm to 2:10pm

The **Teacher Education Division (TED)** works on behalf of special education teacher educators. Supported primarily by volunteers, TED strives to serve its members through a variety of activities that include an annual conference, awards, and website. TED is a diverse community of professionals who lead and support teacher education on behalf of students with exceptional needs and their families. We accomplish this through:

1. Research
2. Professional and Leadership Development
3. Advocacy

## College Student Strand – Governor’s Room

The 2020 MCEC Student Board welcomes you to the Student Strand during the 80<sup>th</sup> Annual Conference

### Thursday Sessions

**8:15am - 9:15am**

#### Teacher Panel

This panel is designed for you to ask any question and receive great advice related to working with support staff, administration, and fellow educators.

**9:25am - 10:25am**

#### Your Conscious Classroom

Forty-four percent of teachers leave the profession within five years. Teacher burnout does not have to be inevitable. Transform your teaching through transforming your life.

**1:10pm - 2:10pm**

#### Medicaid in Schools - Everything You Need to Know

This session will focus on:

- What high-quality (audit sufficient) documentation looks like
- The importance of the random moment time study

**2:20pm - 3:20pm**

#### Effective Classroom Management

This session offers evidence-based classroom management strategies for dealing with emotionally intense classroom students and situations.

**3:30pm - 4:30pm**

#### Looking for Your First Teaching Job?

Whether you are looking for your first teaching job or in search of a new one, there are important things you can do today to stand out in a future interview.

### Friday Sessions

**8:15am - 9:15am**

#### Data, Data, Data, I Have Data...Now What?

An overview of types of data collection will be reviewed in a short presentation.

**9:25am - 10:25am**

#### Educator Know Thyself

This interactive session will provide an overview of Adverse Childhood Experiences (ACEs), mindfulness, and how your own ACE score may impact you as a teacher.

**2:20pm - 3:20pm**

#### Make It, Take It: The Tools You Need!

The MCEC Student Board's annual make-it take-it session is all about tools for you and your students!



## Why Students Should Belong to the Council for Exceptional Children (CEC)

### Top 10 Reasons

**10**

#### Benefits of a Professional at a Special Rate

Continue to pay the student membership rate for the first two years in your teaching profession. Save BIG bucks!!!!

**9**

#### Increase Your Professional Profile

Explore career options on-line in the largest job bank on the Internet devoted exclusively to special education professionals.

**8**

#### Get the Resources You Need at Prices You Can Afford

The CEC Catalog is crammed with resources and materials specifically for special education members. Members save up to 30%.

**7**

#### Keep Up-to-Date on Special Education Issues, Trends, and Findings

CEC Publications TEACHING Exceptional Children, CEC Today, CEC Smart Briefs give you an early look at significant research, practical help and trends in special education.

**6**

#### Network, Network, Network

Get to know and learn from other educators in your community, state, nationally and around the globe.

**5**

#### Make a Difference with Policy Makers

Add your voice to advance the policies that support children with exceptionalities and the professionals who serve them.

**4**

#### Prepare for Employment

Attend the CEC Annual Conference and other CEC professional development opportunities. Access the latest special education information, advocacy for children with exceptionalities and the profession.

**3**

#### Add New Leadership Skills to Your Resume

Participate in your state CEC activities, join a committee, run for office in your student chapter, get involved at all levels of CEC.

**2**

#### Expand Your Knowledge

Join any or all of CEC's 18 special interest divisions to increase your knowledge.

**1**

#### Improve the Educational Success of All Students

Isn't that why you want to become an educator?



Thursday Breakout Sessions Schedule

Thursday Poster Sessions  
1:10pm to 3:10pm • Crown Foyer

2020 MCEC Conference Thursday Day-at-Glance								
Room		8:15-9:15	9:25-10:25	10:45-1:00	1:10-2:10	2:20-3:20	3:30-4:30	
Historical Section – 2 <sup>nd</sup> Floor (Concourse Level)	Ambassador	Exhibitors: 7:30am to 5:00pm						
	Governors <i>Students</i>	Teacher Panel	Your Conscious Classroom	State of the State** • 10:45-12:00 • De Vos Place – Ballroom B Lunch (on your own) • 12:00-1:00 • Exhibit Hall – Ambassador Ballroom	Medicaid in Schools Everything You Need to Know*	Effective Classroom Management	Looking For Your First Teaching Job?	
	Imperial <i>Law</i>		Washington Updates		Legal Mistakes to Avoid in 2020	Counting to Ten: Discipline of Students with Disabilities		
	Vandenberg A <i>Behavior</i>	Fill Your Bag of Tricks with Strategies That Work for ALL Students and Their Needs**			Keeping the Volume Down**	The Rubric Roadmap: Your Guide to High Quality FBAs, BIPs, and IEP Connections**		
	Vandenberg B <i>Behavior</i>	**Script Ahead*			**Script Ahead*		Better Together: An Integrated Approach**	
Gem Rooms– 2 <sup>nd</sup> Floor (Concourse Level)	Emerald A <i>Parents</i>	Exploring Alternatives to Guardianship**	How Can I be Involved? Let Me Count the Ways**		The Secret Life of a Special Needs Family**	I'm All Grown Up: Now What?	Mediate Often, Mediate Early!**	
	Emerald B <i>Behavior</i>	How to be the Fire Keeper Without Getting Burned**			Kids Don't Care How Much You Know...Until**	Data Collection in the Classroom**		
	Pearl <i>Leadership</i>	Someone Please Help ME: The Educational Professional: Secondary Trauma and Self Care			Building Team Capacity to Increase Positive Impacts for Students and Staff**		21 <sup>st</sup> Century Sensory Solutions**	
Conference Level – 3 <sup>rd</sup> Floor	Berkey <i>Assistive Technology</i>	Challenging Behaviors and Staff Collaboration**	Supporting Student Communication Needs**		Early Childhood is Where It's A.T.! A Guide to Implementing Assistive Technology in the Early Childhood	Diffusing is More Than Essential Oils**		
	Grand View A <i>Inclusive Practices</i>	Connections That Count: Impacts of a Strong Sense**	Our Classroom Libraries Speak Volumes		More Than ABC's: Teaching & Learning About Ltrs	EPOCHly Well Students in Your EI Classroom! **	**Digging Into the Path Forward for Michigan*	
	Grand View B/C <i>Transition</i>	Job Interviewing and Vocational Outcomes**	Medicaid in School Everything You Need to Know*		The Dummy's Guide to Transition Services	Get Up Out of Those Chairs! What is MOVE?	20/20 Vision for Transition Based Education**	
	Haldane <i>Early Childhood</i>	Engaging Families in the Evidence Based Practice of Dialogic Reading			MiDEC/MCEC Co-Sponsored Session, including Lunch at 12:00pm and - <i>Coaching Practices in Early Childhood Settings: Supporting Parents and Practitioners</i> **			
	Heritage Hill <i>MDE</i>	Writing Meaningful and Compliant IEPs			MDE Town Hall	Discipline Guide for Comment Areas	Medicaid School-Based Services Expansion	
	Kendall <i>Instruction</i>		MDE/OSE: Supporting Families/Students		Delta Math: Tier 3 Recommendations	Supporting Students with Lrng Difficulties	Foundations of Math: A Shift in Mathematical	
	Nelson <i>Data/Curriculum</i>	Accommodation Tracking with Google	Foundation Skills: Building Blocks to Reading Success		Imagine Every Child Reading for Meaning Fluently	Writing and Communication for Students with Complex Learning Needs		
	Pullman	Childhood Tech Use and Learning: The Good, Bad & Ugly**	Early On® System Updates			Go For It! Creative Goal Setting	PODDY Training A Day in the Life of AAC	
	Thornapple <i>Low Incidence</i>	Bridging the Gap: Hospital/School Partnership**	Creating a CORE Community			Special Educator Empowerment: Striving, Surviving and Thriving**		
	Winchester		Addressing the Dilemma with No Drama**				Social-Emotional Literacy: What's Behavior Got**	Fact or Fiction: Understanding Gifted Educ**
	Pantlind			Annual Mtg./ Member Lunch (12:00-1:00)				
	1 <sup>st</sup> Floor	Ford	Michigan CEC Needs YOU!	MiDCD Division Meeting				

\* Repeated session \*\*Sessions approved for SW-CEs

Assessing the Effectiveness and Use of Bibliotherapy Implementation Among Children with Autism by Board-Certified Behavior Analysts

Presenters: Smriti Abraham, BS, MPH Candidate, Grand Valley State University; Julia VanderMolen, Assistant Professor, Grand Valley State University; Jamie Owen-DeSchryver, Associate Professor of Psychology, Grand Valley State University

For many children with autism, learning to read is a developmental challenge that can affect the achievement of future developmental milestones. The purpose of this study was to survey practicing BCBAs on the use and effectiveness of bibliotherapy to address the social and communication skills of children with autism.

Topic: Assistive Technology  
Level: Basic

A Guideline for a Deaf-Appropriate, American Sign Language-Based Autism Spectrum Disorder Clinical Diagnostic Tool

Presenters: Kiersten Washburn, Central Michigan University Honors Student; Ryanne Reddick, Central Michigan University Honors Student

For the ADOS-2 to be used as a clinical tool among the Deaf and native signing population, there must be a comprehensive adaptation that is compatible with both ASL and Deaf cultural norms for clinicians to use as a guide and a certified interpreter to aid in providing this accuracy.

Topic: Deaf and Hard of Hearing  
Level: Advanced

The Impact of Assistive Technology on Autism Spectrum Disorder: A Systematic Review

Presenters: Angela Bolin, BS, CTRS, Stonecrest Center Behavioral Hospital; Julia VanderMolen, Assistant Professor, Grand Valley State University

The purpose of this research was to review the assistive technology (AT) specific assessment models and instruments that have been developed for children with Autism Spectrum Disorder (ASD) in order to provide an overview of the strategies to be employed in rehabilitation and education. Three electronic databases were searched for peer-reviewed studies investigating children with Autism Spectrum Disorder (ASD) and the use of assistive technology to assist with speech difficulties, little social interaction, and poor motor skills. Relevant studies were independently reviewed and appraised by three reviewers. Methodological quality was quantified using the American Speech-Language-Hearing Association’s levels of evidence. In total, 21 studies were included in the review. We argue that there is a need to develop a more thorough guide for AT professionals in the process of AT assessment for children with Autism Spectrum Disorder.

Topic: Assistive Technology  
Level: Basic

Thursday Sessions: 8:15am - 9:15am

Challenging Behaviors and Staff Collaboration:  
A Real-Life Approach

Presenters: Kaitlyn Lupro, Teacher, National Heritage Academies; Heather Lewis, School Social Worker, National Heritage Academies

Are you struggling to support the students in your class with behavioral needs? This presentation will include a case study and practical strategies for supporting both general education teachers and students in the general education setting with significant behaviors from a special education perspective.

Topic: Behavior  
Level: Basic  
Time: 8:15-9:15 Room: Berkey

Exploring Alternatives to Guardianship

Presenter: Leah Ortiz, Executive Director, The Arc of Calhoun County

Often times, families are pressured into seeking guardianship for their adult child with a disability, even though less intrusive and more effective alternatives are available, all without removing their rights. The Arc of Calhoun County advocates for exploring the Alternatives to Guardianship. Join us, and you will be too!

Topic: Parents and Families  
Level: Basic  
Time: 8:15-9:15 Room: Emerald A

Michigan CEC Needs YOU!  
Getting Involved in a Professional Organization

Presenter: Nichole Moore, Michigan DCD President, Wayne-Westland Community Schools

Are you interested in becoming more involved in Michigan CEC? This interactive professional learning experience will provide participants with an opportunity to develop more understanding of the mission/vision of Michigan CEC and the steps to take to get involved in your state unit. This presentation will discuss current committee work and board positions that may interest you. Michigan CEC needs YOU!

This session is Conference Chair Endorsed

Topic: Michigan CEC  
Level: Basic  
Time: 8:15-9:15 Room: Ford

Teacher Panel

Presenters: Selena Brown, Panel of Teachers/School Professionals, Grand Valley State University

During this panel, you will hear from a variety of professionals in the educational field. From first-year to veteran teachers as well as other professionals in the school setting, you will be able to ask any questions or gather some great advice.

Topic: College Students  
Level: Basic  
Time: 8:15-9:15 Room: Governors

Connections that Count:  
Impacts of a Strong Sense of Community

Presenters: Holly Hoffman, Professor, Central Michigan University; Joe Wentworth, Program Co-Facilitator, Connections that Count - Central Michigan University

This session will provide an overview of Connections that Count, a mentorship program connecting college student volunteers with youth impacted by disabilities. Highlights of the program history, expansion process, future goals, and research focused on positive impacts on participants, volunteers, families, and community members are provided.

Topic: High Incidence  
Level: Basic  
Time: 8:15-9:15 Room: Grand View A



Thursday Sessions: 8:15am - 9:15am

Job Interviewing and Vocational Outcomes Among  
Transition-Age Youth with Educational Disabilities

Presenter: Kari Sherwood, PhD Student, University of Michigan

Vocational outcomes among transition-age youth with educational disabilities are critically low. Moreover, few studies highlight whether interviewing may be critical to obtaining vocational outcomes such as competitive employment or internships. This study evaluated vocational interviewing and outcomes among n=656 transition-age youth with educational disabilities receiving transition services from n=44 schools. Results suggest 21% of transition-age youth with educational disabilities were currently employed, and 89% of these employed youth interviewed prior to obtaining their job. Job interviewing commonly occurs prior to obtaining a job and can be a future intervention target.

Topic: Transition  
Level: Intermediate  
Time: 8:15-9:15 Room: Grand View B/C

Accommodation Tracking with Google

Presenter: Kalina McCormick, Special Education Teacher, St. Joseph Public Schools - E. P. Clarke Elementary

Learn how to utilize Google forms and sheets to track accommodations. This can be utilized by general education teachers as well. It is an easy, efficient, and quick way to log accommodations.

Topic: Data Collection  
Level: Basic  
Time: 8:15-9:15 Room: Nelson



Childhood Technology Use and Learning:  
The Good, The Bad, and The Ugly

Presenters: Tammie Jensen, Speech Pathologist, Port Huron Area School District; Angela Tucker, Occupational Therapist, Port Huron Area School District

Research has shown that technology use in younger children can significantly affect brain development, learning, motor skills, sensory processing skills and emotional regulation. This presentation shows an overview of neurological impact as well as lists of technology that is inhibitive versus technology that is helpful in educational settings. Since schools are moving closer to 1:1 device experiences, this presentation will provide a variety of appropriate resources and hands on activities for students.

Topic: Technology Use & Supports in Early Childhood  
Level: Intermediate  
Time: 8:15-9:15 Room: Pullman

Bridging the Gap: Hospital/School Partnerships

Presenters: Elizabeth Stuchell, School Intervention Specialist, Michigan Medicine; Beth Tobey, Teacher Consultant for Autism Spectrum Disorder, Hillsdale County Intermediate School District

Children and adolescents who live with a complex, chronic illness exist in two worlds: medical and school. When these two worlds operate in isolation, students and caregivers are placed in the middle, often acting as the go-between. This puts significant pressure on students and their families, and can lead to misunderstanding and miscommunication

Topic: Complex and Chronic Conditions  
Level: Intermediate  
Time: 8:15-9:15 Room: Thornapple



Thursday Sessions: 8:15am - 10:25am

How to Be the Fire Keeper Without Getting Burned

Presenter: Diana Wheatley Hagemann, School Social Worker, New Haven Community Schools

This presentation examines social worker burnout and resilience strategies. It discusses:

- Burnout's impact on service delivery in schools
- Reasons why social workers engage in self-neglect
- Stereotypical barriers to self-care
- Strategies and best practices for effective self-care
- Experiencing joy in social work service
- Current self-care plans' evaluation and enhancement

Topic: School Social Worker  
Level: Intermediate  
Time: 8:15-10:25 Room: Emerald B

Engaging Families in the Evidence Based Practice of Dialogic Reading

Presenters: Danya Stump, Special Education Teacher, Farmington Public Schools; Maria McDermott, Speech and Language Pathologist, Farmington Public Schools

Dialogic Reading is an evidence based practice which engages learners with literacy by using five different levels of questioning. Research shows that students who engage in the process of Dialogic Reading have higher scores in oral language. Training families to engage in this practice at home results in a further increase in skills. Families can engage their students in the practice no matter what functional level their child is at.

Topic: Early Childhood  
Level: Basic  
Time: 8:15-10:25 Room: Haldane

Writing Meaningful and Compliant IEPs

Presenters: Sarah Radu, Special Education Consultant, MDE OSE; Kristina Collier, Special Education Consultant, Michigan Department of Education

This session provides insight into the IEP process and is an opportunity to build your skill-set around writing meaningful and compliant IEPs. Join us to collect helpful handouts and interactive discussions, all related to the creation, implementation, maintenance, review, and revision of student IEPs.

Topic: Curriculum  
Level: Basic  
Time: 8:15-10:25 Room: Heritage Hill

Someone Please Help ME!" The Educational Professional: Secondary Trauma and Self Care

Presenters: John Ball, Co-Founder, Celebrate Hope LLC; Lisa Goyette, Co-founder, Celebrate Hope LLC

The role that a special education educator fulfills is a significant one. They provide not only educational support to those that they serve, but they also serve as care providers to a population that requires a great deal of emotional and physical support. The responsibility that the staff member is expected to fulfill has the potential of taking an emotional toll. This Celebrate Hope seminar provides an excellent overview for developing a professional staff who understands the value of self-care in the midst of the stressors and secondary trauma that they experience, but it will also reinforce the responsibility that they have to the individuals and families that they serve without compromising quality education.

This session is Conference Chair Endorsed

Topic: Leadership  
Level: Intermediate  
Time: 8:15-10:25 Room: Pearl

Thursday Sessions: 8:15am - 10:25am

Fill Your Bag of Tricks with Strategies That Work for ALL Students and Their Needs

Presenter: Kerri LaDuke, Special Education Consultant, Macomb Intermediate School District

Do you want to explore strategies to use in your classroom to reach ALL your students? This session will provide strategies to help teachers of preschool and elementary students who may have behavioral, sensory, learning and emotional needs that impact them in the classroom. Come refill your bag of tricks with ideas you can implement immediately.

Topic: Behavior  
Level: Intermediate  
Time: 8:15-10:25 Room: Vandenberg A

Script Ahead

Presenters: Kelly Rogers, Autism Education & Intervention Specialist, BCBA, START (Statewide Autism Resources & Training); Stephanie Dyer, Professional Learning Content Specialist, MIBLSI / START

This session outlines a process for writing function-based behavior plan strategies in script format and provides examples of universal supports and prevention scripts as well as scripts to respond to challenging behaviors. The scripts are organized in a level system to support implementation consistency and fidelity and a team process for monitoring behavior plan success is included.

This session is Conference Chair Endorsed

Topic: Behavior  
Level: Intermediate  
Time: 8:15-10:25 Room: Vandenberg B





## Thursday Sessions: 9:25am - 10:25am

### Supporting Student Communication Needs in the General and Special Education Classroom

*Presenter: Sara Pericolosi, Speech-Language Pathologist, MA/CCC-SLP, Alt+Shift*

All people have a basic right to affect, through communication, the conditions of their existence. This interactive session is geared toward pre-service and current teachers, ancillary staff and administration. Participants will leave with tools and strategies they can immediately implement to support their students' communication needs.

*Topic: Assistive Technology*

*Level: Basic*

*Time: 9:25-10:25 Room: Berkey*

### How Can I Be Involved? Let Me Count the Ways" Parental Involvement of Special Learners in Mid-Western Schools

*Presenter: Dr. Rochelle Massingill, Special Education Department, Detroit Public Schools Community District*

Parental involvement is a tool that parents can use to stimulate learning for students with unique learning needs. This workshop explores background, research, and ways on how to increase learning by using parental involvement support services and resources provided to students enrolled in special education programs.

*Topic: Parents and Families*

*Level: Basic*

*Time: 9:25-10:25 Room: Emerald A*

### Michigan's Division for Communication, Language and Deaf/Hard of Hearing (MiDCHD) - Annual Meeting

This annual meeting is for all current and interested members of Michigan's Division for Communication, Language and Deaf/Hard of Hearing (MiDCHD). This meeting will focus on annual division updates and opportunities for becoming more involved in the organization.

*Topic: MiDCHD*

*Level: Basic*

*Time: 9:25-10:25 Room: Ford*

### Your Conscious Classroom

*Presenter: Candis Ogilvie, Trainer, Yoga Ed*

Forty-four percent of teachers leave the profession within five years. Teacher burnout does not have to be inevitable. This session with long time educator and yoga instructor, Candis Ogilvie begins to inspect the way we live our lives through three lenses: self-awareness, self-management, and self-care. Transform your teaching through transforming your life.

*Topic: Leadership*

*Level: Basic*

*Time: 9:25-10:25 Room: Governors*

### Our Classroom Libraries Speak Volumes: How Texts Can Transform and Inform Perceptions of (Dis)ability

*Presenters: Laura Reissner, Professor, Northern Michigan University; Kristen White, Assistant Professor, Northern Michigan University*

What does your classroom library say about your view of disability? Students with disabilities should have texts that mirror themselves and help inform their peers. Books can help transform ideas of both disability and normativity. A look at inclusive texts addressing Michigan's Essential Instructional Practices in Literacy across grades and strategies for selecting texts will be shared.

*Topic: High Incidence*

*Level: Basic*

*Time: 9:25-10:25 Room: Grand View A*

### Medicaid in Schools - Everything You Need to Know About Documenting Your Services

*Presenter: Lynette Lynch, Manager, School Medicaid Cost Recovery, Jackson County Intermediate School District*

As a special education teacher, you are required to document targeted case management services for some of your special education students for the School-Based Services (Medicaid) program in your district. This session will focus on:

- What high-quality (audit sufficient) documentation looks like
- The importance of the random moment time study

*Topic: Medicaid in the Schools*

*Level: Basic*

*Time: 9:25-10:25 Room: Grand View B/C*

## Thursday Sessions: 9:25am - 10:25am

### MDE/OSE: Supporting Families and Students

*Presenters: Stacie Rulison, Consultant, MDE - Office of Special Education; David Gruber, Director, Special Education Mediation Services; Kanika Littleton, Project Manager, Michigan Alliance for Families*

It's a little known fact that the Office of Special Education (OSE) offers statewide resources to help parents understand and navigate the special education system, support their students in school, improve communication with school districts and resolve disputes. These resources are at your fingertips. Learn more about Family Matters, Michigan Alliance for Families and Special Education Mediation Services, all OSE grant-funded initiatives designed to help parents help their students succeed.

*Topic: Parents and Families*

*Level: Basic*

*Time: 9:25-10:25 Room: Kendall*



### Washington Updates

*Presenter: Laurie VanderPloeg, Director of Office of Special Education Programs*

The purpose of this session is to review and discuss how the national Office of Special Education Programs (OSEP) is dedicated to improving results for infants, toddlers, children and youth with disabilities ages birth through 21 by providing leadership and financial support to assist states and local districts. Will review OSEP's current priorities, policies and resources.

*This session is Conference Chair Endorsed*

*Topic: Leadership*

*Level: Intermediate*

*Time: 9:25-10:25 Room: Imperial*

### Foundation Skills: Building Blocks to Reading Success

*Presenter: Pamela Owens, Ed. Consultant, Read Naturally*

By taking a quick look at key research and the implications for instruction and reading achievement, participants will come away understanding how to implement effective strategies for teaching print concepts, phonemic awareness, phonics & word recognition, and reading fluency. These research-based strategies can be applied using curriculum materials currently available in classrooms.

*Topic: Curriculum*

*Level: Basic*

*Time: 9:25-10:25 Room: Nelson*





## Thursday Sessions: 9:25am - 10:25am

### Early On® System Updates

*Presenter: Noel Keltz, Early On® Manager, MDE*

The Michigan Department of Education, Office of Great Start/Early Childhood Development and Family Education, is the state lead agency for Early On® Michigan. The Office is responsible in administering the Part C of the Individuals with Disabilities Act. This session will provide participants with timely federal and state updates and opportunities, both informing the Early On® system and it's intersection with the Michigan Department of Education's top priorities.

*Topic: Early Childhood*  
*Level: Intermediate*  
*Time: 9:25-10:25 Room: Pullman*

### Creating a CORE Community

*Presenters: Elisabeth Mills, Assistive Technology Coordinator, Jackson County Intermediate School District; Krystie Adorjan, Speech Language Pathologist, Jackson County ISD; Sarah Behncke, Speech Language Pathologist, Jackson County ISD; Lynnelle Tans, Speech Language Pathologist, Jackson County ISD*

During this session, the Core Vocabulary team from Jackson County Intermediate School District (JCISD) will take you on our journey to implement Core Vocabulary to a center-based program. Our program has been living "CORE" for 4 years. In this session, we will explore how JCISD arrived at using Core Vocabulary, the training, data collection, and tweaks we have made along the way, and some real-life examples of using Core every day. We will cover our use of the Communication Matrix, videos of our Core assemblies, adapted books of the month, monthly Core lessons, our teacher resource room, student jobs, various uses of Alternative and Augmentative Communication, and forms for various data tracking. Join us on our journey from a great idea, to a school wide initiative, and into our local Core community in Jackson, Michigan.

*Topic: Low Incidence*  
*Level: Intermediate*  
*Time: 9:25-10:25 Room: Thornapple*

### Addressing the Dilemma With No Drama: Utilizing Ethical Decision-Making Frameworks in Practice

*Presenters: Dawn Decker, Professor, Central Michigan University; Chelsey Belcher, CMU doctoral student, Central Michigan University; Jordan Wolfe, CMU master's student, Central Michigan University; Hayley Oles, CMU undergraduate student, Central Michigan University*

This session will share the results of a systematic literature review examining ethical decision-making frameworks proposed in the literature. This session will review frameworks proposed in the literature, and demonstrate how frameworks can be used to support special educators in anticipating situations when ethical dilemmas occur.

*Topic: Collaboration*  
*Level: Basic*  
*Time: 9:25-10:25 Room: Winchester*



## Thursday Sessions: 1:10pm - 2:10pm

### The Secret Life of a Special Needs Family

*Presenter: Rita Molino, Parent, Advocate, Educator, Teach-Now Graduate School for Education*

Attendees will gain insights to connect with the families of children with exceptional needs. Rita uses humor and inspirational stories to invite you into her secret world as a mom to Ryan, Christopher, and Scotty. Learn what life is like for a family raising a son with special needs. Scotty has Angelman Syndrome. This diagnosis affects not only Scotty but the entire family. Attendees will hopefully walk away with an attitude of empathy not sympathy for families they encounter. Presuming competence and parents as partners are her fundamental beliefs as an educator and mom. Join Rita for a journey of laughter, tears, struggles, and victories as she and her family have taken on the world of special needs for the last 18 years. Be inspired to be a better teacher, advocate, and build better relationships with your families.

*Topic: Parents and Families*  
*Level: Basic*  
*Time: 1:10-2:10 Room: Emerald A*

### Kids Don't Care How Much You Know...Until They Know How Much You Care

*Presenter: Kellie Bugajski, Educational Consultant and Training Specialist, Retired Educator*

Students who experience respect and unconditional acceptance from their teacher and peers are more likely to be respectful, compliant, and open to learning. This powerful social component of student success involves using both verbal and nonverbal communication skills that positively impact students. In this interactive session, discover several researched-based strategies that teachers can use tomorrow to greatly impact their classroom climate and improve academic success.

*Topic: Behavior*  
*Level: Basic*  
*Time: 1:10-2:10 Room: Emerald B*

### Medicaid in Schools - Everything You Need to Know About Documenting Your Services

*Presenter: Lynette Lynch, Manager, School Medicaid Cost Recovery, Jackson County Intermediate School District*

As a special education teacher, you are required to document targeted case management services for some of your special education students for the School-Based Services (Medicaid) program in your district. This session will focus on:

- What high-quality (audit sufficient) documentation looks like
- The importance of the random moment time study

*Topic: Medicaid in the Schools*  
*Level: Basic*  
*Time: 1:10-2:10 Room: Governors*

### More than ABCs: Teaching and Learning About Letters in Early Literacy Intervention

*Presenter: Mary Lose, Professor, Oakland University*

This interactive session examines letter-learning complexities, describes efficient ways to track students' progress with letter learning, and uses videos, transcripts, and hands-on learning opportunities. Participants will explore powerful teaching that integrates opportunities for extending letter knowledge while focusing on children's strengths and supporting their growth in reading and writing.

*Topic: High Incidence*  
*Level: Intermediate*  
*Time: 1:10-2:10 Room: Grand View A*

### The Dummy's Guide to Transition Services for Adults with Complex Needs

*Presenters: Jim Lóser, Assistant Superintendent Special Education, Ionia County ISD; Daisy Cook, Transition Supervisor, Ionia County ISD; Ben Croel, Transition Teacher, Ionia County ISD*

We have made a paradigm shift in Ionia County in how we support transition-aged students ages 19-26. Did this come with apprehension and opposition? You bet! Was it worth it? You bet!

*Topic: Transition*  
*Level: Intermediate*  
*Time: 1:10-2:10 Room: Grand View B/C*



Thursday Sessions: 1:10pm - 2:10pm

MDE Town Hall

Presenter: Teri Chapman, Director of Special Education, MDE - Office of Special Education

Join the MDE Office of Special Education Director, Teri Chapman and staff, to discuss current issues and initiatives in special education. Teri and her team will also address questions from conference participants.

Topic: Leadership  
Level: Basic  
Time: 1:10-2:10 Room: Heritage Hill

Legal Mistakes to Avoid in 2020

Presenter: Robert Lusk, Attorney, Lusk & Albertson, P.L.C.

Recent years have witnessed several significant changes and developments in the federal and Michigan laws governing the education of students with disabilities. This presentation identifies the most significant of those changes, including: FAPE after Endrew F; exhaustion of administrative remedies after Fry; least restrictive environment (LRE) after the Sixth Circuit’s decision in LH v Hamilton County Board of Education; the controversy over disproportionality; the effects of the Michigan Department of Education’s (MDE) changes to state complaint procedures; and, the manner in which the “direct threat” provision of the Americans with Disabilities Act (ADA) may be used to increase safety in the school environment.

Topic: Legal  
Level: Advanced  
Time: 1:10-2:10 Room: Imperial



Delta Math: Tier 3 Recommendations Based on Research and Experience

Presenter: Michael Klavon, Math Consultant, Ottawa Area ISD

This session will explore recommendations for supporting exceptional children using Delta Math resources based on research from the IES Practice Guide: Assisting Students Struggling with Mathematics: Response to Intervention (RtI) for Elementary and Middle Schools (2009) and experience working with special education teachers throughout Michigan over the past 5 years.

Delta Math is an RtI program developed by the Ottawa Area ISD with support from Alt-Shift/(MI)2 and Michigan math consultants. It includes online readiness screeners to identify students for Tier 2 interventions, Tier 3 screeners for students not responding to Tier 2 interventions, reports, progress monitoring and instructional resources.

Topic: High Incidence  
Level: Basic  
Time: 1:10-2:10 Room: Kendall

Imagine Every Child Reading for Meaning: Fluently

Presenter: Pamela Owens, Education Consultant, Read Naturally

Participants will learn how to develop fluency, support vocabulary, and promote comprehension by combining three research-based strategies: teacher modeling, repeated reading, and progress monitoring, into one powerful strategy. These highly effective strategies accelerate reading achievement by providing support, structure, and highly motivating daily reading opportunities for struggling and developing readers of all ages. The Read Live intervention program will be used to demonstrate the step-by-step approach, however the three combined strategies can also readily be applied to materials already found in classrooms.

Topic: Curriculum  
Level: Basic  
Time: 1:10-2:10 Room: Nelson

Thursday Sessions: 1:10pm - 2:10pm

Keeping the Volume Down

Presenters: Vicky James, Board Certified Behavior Analyst, Ann Arbor Public Schools; David Barton, Board Certified Behavior Analyst, Ann Arbor Public Schools

Keeping the Volume Down is a de-escalation and universal language approach to dealing with challenging behavior. Participants will examine a common language to identify and de-escalate challenging behavior before it turns into a crisis. They will also discuss how reflecting on their own responses to a crisis can prevent future emergencies from occurring. Going forward, this hands off approach can lend itself to many days of keeping the challenging behavioral volume turned down.

Topic: Behavior  
Level: Basic  
Time: 1:10-2:10 Room: Vandenberg A





Thursday Sessions: 1:10pm - 3:20pm

Early Childhood is Where It's A.T!  
A Guide to Implementing Assistive Technology  
in the Early Childhood Classroom

Presenters: Kelsey Brewer, ECSE Teacher, Gratiot-Isabella RESD; Carolyn Parker, SLP-CCC, Gratiot-Isabella RESD

This session will explore a multidisciplinary approach to assistive technology practices used in a play-based early childhood special education classroom. Supports specifically focusing on communication, environmental adaptations, and visual/tactile supports will be examined. Participants will focus on creating action plans to support assistive technology in their classroom.

Topic: Assistive Technology  
Level: Intermediate  
Time: 1:10-3:20 Room: Berkey

Building Team Capacity to Increase  
Positive Impacts for Students and Staff

Presenter: Sara Pericolosi, Speech-Language Pathologist, MA/CCC-SLP, Alt+Shift

This session is geared toward providers and administrators who are hoping to expand the impact of any initiative. Within the session, presenters will share specific tools, strategies, and activities to increase team capacity. Attendees will have an opportunity to engage in conversation related to current practices, goals, and specific strategies to address targeted areas.

Topic: Leadership  
Level: Basic  
Time: 1:10-3:20 Room: Pearl

Script Ahead

Presenters: Kelly Rogers, Autism Education & Intervention Specialist, BCBA, START (Statewide Autism Resources & Training); Stephanie Dyer, Professional Learning Content Specialist, MIBLSI/START

This session outlines a process for writing function-based behavior plan strategies in script format and provides examples of universal supports and prevention scripts as well as scripts to respond to challenging behaviors. The scripts are organized in a level system to support implementation consistency and fidelity and a team process for monitoring behavior plan success is included.

Topic: Behavior  
Level: Intermediate  
Time: 1:10-3:20 Room: Vandenberg B



Thursday Session: 1:10pm - 4:30pm



Coaching Practices in Early Childhood Settings:  
Supporting Parents and Practitioners

Presenters: Sophia D'Agostino, PhD, Hope College; Sarah Douglas, PhD, Michigan State University

Coaching is a promising practice and professional development tool that can help adult learners gain skills to support children with disabilities. This workshop will provide learners with key coaching strategies that can be used with both parents and practitioners and will outline innovative delivery methods to deliver coaching.

Topic: Early Childhood  
Level: Basic  
Time: 1:10-4:30 Room: Haldane

Thursday Sessions: 2:20pm - 3:20pm

I'm All Grown Up... Now What?

Presenters: Linda Vernia, Parent; Joni Vernia, CEC-S Student Board, MCEC

A parent's perspective of what happens when your child with specials needs grows up. Questions you might not know you have to ask. Information will be discussed about when you retire, and what personal decisions we made about family finances.

Topic: Parents and Families  
Level: Basic  
Time: 2:20-3:20 Room: Emerald A

Effective Classroom Management

Presenter: Jason Hoogenstyn, Teacher, Northview Public Schools

This session offers evidence-based classroom management strategies for dealing with emotionally intense classroom students and situations. You will be able to: identify positive ways to interact with students, define the idea of classroom management, and have an understanding of how to change behavior rather than punish it.

Topic: College Students  
Level: Basic  
Time: 2:20-3:20 Room: Governors

EPOCHly Well Students in Your EI Classroom!

Presenters: Chris Bernick, Teacher, Berrien RESA; Melanie Foster, Teacher, Berrien RESA; Tyler Park, Teacher, Berrien RESA; Jennifer Robbins, Teacher, Berrien RESA

Can a secondary social skills class increase the happiness and quality of life for students with an emotional impairment? Join us on our journey as we focus on the findings from the science of wellbeing. We will share our results so you can increase the wellbeing of your students.

Topic: Behavior  
Level: Basic  
Time: 2:20-3:20 Room: Grand View A

Get Up Out of Those Chairs! What Is MOVE?  
(Mobility Opportunities Via Education/Experience)

Presenters: Rebecca Wieger Special Education Teacher, Ingham ISD; Stacy Lantzy, Stacy Lantzy, Special Education Teacher, Ingham ISD

Have you heard of the MOVE program? Ever feel like you are just feeding and toileting your students all day without getting academic and daily mobility skills fit into your routine? Learn more information about the MOVE program which is design to help embed independence for mobility into your classroom routine. We are MOVE International Trainers. Come and learn the benefits of implementing MOVE into your classroom. You will walk away with success stories and how to contact MOVE to become a basic provider.

Topic: Mobility and Transition of Students with Severe Multiple Impairments  
Level: Basic  
Time: 2:20-3:20 Room: Grand View B/C

Discipline Guidance for  
Comment Areas of Non-Compliance

Presenter: Charles Thomas, Consultant, MDE - Office of Special Education

The Michigan Department of Education Office of Special Education will present on recent discipline guidance, tools for reducing suspensions and expulsions, and the district's responsibility to respond to emerging behaviors.

Topic: Behavior  
Level: Basic  
Time: 2:20-3:20 Room: Heritage Hill

Supporting Students with Learning Difficulties  
in the General Education Classroom

Presenter: Briana Bancroft, Math Accessibility Specialist, Alt+Shift

This interactive session will introduce participants to a planning framework that can strengthen accessibility and support for students with learning difficulties. Designed for in-service and pre-service teachers, this session offers a planning tool and strategies that can be implemented immediately across different content areas.

Topic: High Incidence  
Level: Basic  
Time: 2:20-3:20 Room: Kendall

Thursday Sessions: 2:20pm - 3:20pm

Go For It! Creative Goal Setting Techniques to Support Growth in Early Childhood Special Education Professionals

Presenter: Holly Hoffman, Professor, Central Michigan University

This session will provide specific examples of goal setting techniques to support creative and efficient goal completion in both professional and personal realms. In this community of learners, we will discuss how holistic approaches addressing academic, employment, personal achievement, relationship based goals on a weekly, monthly, and long term basis have the potential to benefit early childhood special education professionals. Approaches have resulted in self-reported increases in self-confidence, knowledge, and levels of preparedness by goal setters, as they increase goal attainment.

Topic: Early Childhood  
Level: Intermediate  
Time: 2:20-3:20 Room: Pullman

Social Emotional Literacy: What's Behavior Got To Do With It?

Presenters: Monica Harris, MiTED President & TED Liaison, Grand Valley State University; Linda Pickett, Associate Professor, Grand Valley State University

Social-Emotional Literacy (SEL) is integral to any PreK-12 curriculum. This session will examine methods to help anticipate problem behavior and use effective communication approaches (I-messages, reflective listening, circle meetings, problems as teachable moments). Join us to explore how to use the ABCs of behavior and approaches for responding to specific challenging behaviors.

Topic: Behavior  
Level: Basic  
Time: 2:20-3:20 Room: Winchester



Thursday Sessions: 2:20pm - 4:30pm

Data Collection in the Classroom

Presenter: Lisa Drumb, Assistant Teaching Professor of Special Education, Marian University

This session will allow participants a chance to dive into various data collection methods that can be easily utilized in the classroom. Examples of data collection methods to be discussed include: frequency, duration, partial interval, and antecedent, behavior, and consequence (ABC) data. Participants will also have the opportunity to practice creating data sheets as well as collecting data during the session.

Topic: Data Collection in the Classroom for Challenging Behaviors and Replacement Behaviors  
Level: Basic  
Time: 2:20-4:30 Room: Emerald B

Counting to Ten: Discipline of Students with Disabilities

Presenter: Jordan M. Bullinger, Attorney, Clark Hill

In-school suspensions, out-of-school suspensions, and expulsions – these situations can be complicated and time-sensitive. The presenter will cover the most important legal requirements and present real-life cases to illustrate key discipline rules and regulations. Attendees will gain an understanding of judicial and administrative decisions plus practical suggestions of the do's and don'ts of disciplining students with disabilities.

Topic: Behavior  
Level: Basic  
Time: 2:20-4:30 Room: Imperial

Writing and Communication for Students with Complex Learning Needs

Presenters: Janet Sturm, Professor, Central Michigan University; Chelsea Herron, Teacher, Clare-Gladwin RESD; Mallari Fachting, Teacher, Clare-Gladwin RESD

Join the revolution in providing instructional contexts that optimize foundational writing and communication skills for students with complex learning needs such as autism spectrum disorders and moderate and severe cognitive disabilities. Participants will learn authentic communication and writing goals and instructional strategies that align with the College and Career Readiness Standards and alternate assessments, illustrated with classroom and case examples.

Topic: Curriculum  
Level: Basic  
Time: 2:20-4:30 Room: Nelson

Special Educator Empowerment: Striving, Surviving, & Thriving

Presenters: Brandis Ansley, Assistant Professor of Special Education, Central Michigan University; JoDell Heroux, Associate Professor of Special Education, Central Michigan University

Special educators are often caring, compassionate, and empathetic human beings who are dedicated to bringing out the best in their students. Yet, due to intense job demands and external factors beyond their control, many find themselves feeling deflated, demoralized, and burned out. In recent years, self-care has been a trending topic and to no surprise, has captured the attention of special educators. However, self-care is much more than choosing to meditate or go for a run. It is a mindset, a personal space, and a lifestyle. Presenters will provide attendees with strategies, hacks, and approaches to support their well-being. With this information, attendees will create a personalized self-care plan that empowers them to prioritize their needs while simultaneously supporting the needs of others.

Topic: Special Educator Empowerment  
Level: Intermediate  
Time: 2:20-4:30 Room: Thornapple



Thursday Sessions: 2:20pm - 4:30pm

The Rubric Roadmap: Your Guide to High Quality FBAs, BIPs, and IEP Connections

Presenters: Renee Thelen, Director of Accountability & Program Improvement, Ionia County Intermediate School District; Abbey Mix, Autism Coach, Kent ISD; Shannon Shy, Program Consultant for Behavior Support, Livingston ESA

School teams often support students with challenging behavior who require a Functional Behavior Assessment and Behavior Intervention Plan, as well as an Individualized Education Program. However, the quality of these supports may vary based on training, skills, and experience. Rubrics are an efficient way to set performance and quality expectations, as well as measure the work of an individual and/or team. School teams who wish to grow their skills with conducting FBAs, designing BIPs, and connecting these documents to the IEP can use rubrics as a road map to increase quality and improve student outcomes. Attendees will learn how to use simple rubrics to assess the quality of functional behavior assessments and behavior intervention plans, as well as how to connect the assessment data and goals from these documents into the student's IEP.

Topic: Behavior  
Level: Intermediate  
Time: 2:20-4:30 Room: Vandenberg A



Thursday Sessions: 3:30pm - 4:30pm

Diffusing Is More Than Just For Essential Oils

Presenter: Kellie Bugajski, Educational Consultant & Training Specialist, Retired Educator

One of the greatest misconceptions in education is that students come to school knowing how to behave. In this interactive session, discover how to teach behavioral expectations by utilizing research-based classroom management tips and techniques that can be implemented into your K-12 classroom tomorrow with positive and observable results. Explore how to diffuse discipline problems before they become an instructional disruption in your classroom. Learn how these simple changes will greatly impact the climate of your classroom, increase academic success, and improve test scores.

Topic: Behavior  
Level: Basic  
Time: 3:30-4:30 Room: Berkey

Mediate Early - Mediate Often!

Presenters: Andrea Magyar, Executive Director, Special Education Mediation Services; Cheryl Levine, Program Coordinator, Special Education Mediation Services; Laura Zangara, Intake Coordinator, Special Education Mediation Services

Special education issues are complex and can best be solved by working together. The earlier collaborative communication support is engaged, the less entrenched schools and parents can become. There are many benefits including reduced financial and emotional costs, individual agreements with greater follow through and improved relationships.

Topic: School/parent collaboration  
Level: Basic  
Time: 3:30-4:30 Room: Emerald A

Looking for Your First Teaching Job? Learn These Ways to Stand Out in the Interview and What to Expect During Your First Year of Teaching

Presenter: Tyler Harms, Special Education Teacher, Author, Sparta Area Schools

Whether you are looking for your first teaching job or in search of a new one, there are important things you can do today to stand out in a future interview. You will also get some great insight and advice on how to make the most of your first year of teaching.

College Students  
Intermediate  
3:30-4:30 Governors

Digging into the "Path Forward" for Michigan

Presenter: Abby Cypher, Lobbyist/Government Relations, Michigan Association of Administrators of Special Education (MAASE)

In July of 2018, the state of Michigan was issued a determination of "Needs Intervention" for special education. A large stakeholder group, led by MDE, formulated a well thought out "Path Forward" to better outcomes for students with disabilities. This work has officially begun! Please join us for a progress report and find out how you can get involved.

Topic: Leadership  
Level: Basic  
Time: 3:30-4:30 Room: Grand View A





# Thursday Sessions: 3:30pm - 4:30pm

## 20/20 Vision for Transition Based Education: Moving Students from Dependency to Independence on a Foundation of Evidenced-Based Teaching Strategies

Presenter: George Armstrong, Teacher / High School Special Education, Public Schools of Petoskey

Transition Based Education will demonstrate the use of age appropriate assessments, post-secondary goals, and evidenced-based teaching strategies to support students on their path from dependency to their desired future. This presentation will include case studies that will demonstrate student focused planning, student development, family involvement, program structures and inter-agency collaboration.

Topic: Transition  
Level: Intermediate  
Time: 3:30-4:30 Room: Grand View B/C

## Medicaid School-Based Services Expansion

Presenter: Dana Billings, Consultant, MDE - Office of Special Education

In this presentation we will review the current updates and expansion of the Medicaid School-Based Services Program/Caring 4 Students (C4S) and how it connects to Section 31n (MCL 388.1631n) from Public Act 586 of 2018, which provides funding to Intermediate School Districts (ISDs) for school mental health and support services. Highlights will include the expansion policy, Caring 4 Students, 31n legislation and the implications to the field.

Topic: Medicaid  
Level: Basic  
Time: 3:30-4:30 Room: Heritage Hill

## Foundations of Math: A Shift in Mathematical Thinking Can Change Mathematical Outcomes

Presenters: Briana Bancroft, Math Accessibility Specialist, Alt+Shift; Mike Wolf, Special Education Teacher Consultant, Charlevoix-Emmet ISD

This session will provide teachers an overview of the Foundations of Math course that has supported teachers and districts around Michigan in improving math instruction. We will share research and examples of content from the course that will allow participants to leave with strategies designed to increase student learning.

Topic: High Incidence  
Level: Basic  
Time: 3:30-4:30 Room: Kendall

## 21st Century Sensory Solutions: Tech and No-Tech Supports for Today's Students

Presenter: Kindy Segovia, Assistive Technology Supervisor, Kent ISD

Join us to explore sensory strategies relevant today - from no-tech sensory tools to apps and Alexa, look at new ways to teach students to advocate for and regulate themselves. Whether your students have identified sensory processing difficulties or just struggle with self-regulation, expand your toolkit with these supports that can be utilized by students through adulthood!

Topic: Assistive Technology  
Level: Basic  
Time: 3:30-4:30 Room: Pearl

## PODDY Training: A Day in the Life of AAC Preschool

Presenters: Armen Gulian, Speech Language Pathologist, Royal Oak Schools; Kristin Gembis, Teacher and Autism Consultant, Royal Oak

Being a preschool teacher isn't an easy job. Being a pre-school teacher in Special Education is even harder. How do you help young children with complex communication needs express themselves for all the different functions of behavior? Join a Teacher and SLP as they describe their AAC journey implementing system change and evolving attitudes about communication; one diaper, snacks, and owie at a time.

Topic: Augmentative and Alternative Communication AT/UDL, Early Childhood  
Level: Basic  
Time: 3:30-4:30 Room: Pullman



# Thursday Sessions: 3:30pm - 4:30pm

## Better Together: An Integrated Approach to Multi-Disciplinary Behavior Support Services in Schools

Presenters: Rena VanDerwall, Doctoral Student, Western Michigan University; Carly Schroeder-MacKay, Doctoral Student, Western Michigan University

We will share our experiences and resources for working on an ongoing, multidisciplinary behavior support team. This allows us to proactively identify student needs and provide ongoing implementation support and follow up. Strategies for building relationships with staff, communication, collaboration, and systems to facilitate multidisciplinary work will be discussed.

Topic: Behavior  
Level: Intermediate  
Time: 3:30-4:30 Room: Vandenberg B

## Fact or Fiction: Understanding Gifted Education

Presenters: Kelly Schultz, Director, Academically Talented Youth Program; Nan Janecke, Program Coordinator, Academically Talented Youth Program

Obstacles to meaningful learning for gifted students stem from mis-perceptions about their academic, social, and emotional needs. Using research-based strategies for identification and teaching makes an impact in the classroom, while discovering more about twice-exceptional and ELL/under-represented minorities allows all highly-able children to benefit fully from the school experience.

Topic: Gifted and Talented  
Level: Basic  
Time: 3:30-4:30 Room: Winchester





Friday Breakout Sessions Schedule

Friday Poster Sessions

1:10pm to 3:10pm • Crown Foyer

2020 MCEC Conference Friday Day-at-Glance						
Room		8:15-9:15	9:25-10:25	10:40-1:00	1:10-2:10	2:20-3:20
Historical Section – 2 <sup>nd</sup> Floor (Concourse Level)	Ambassador	Exhibitors: 7:30am to 2:00pm				
	Governors <i>Students</i>	Data, Data, Data, I Have Data...Now What?*	Educator, Know Thyself**			Make It, Take It: The Tools You Need!
	Imperial <i>Law</i>		Special Education on the Front Lines			
	Vandenberg A <i>Behavior</i>				What's the Point of a Point Sheet: 10 Common Mistakes	A Balancing Act: Working with Kids w/Behavior**
	Vandenberg B <i>Behavior</i>	Functional Behavior Assessment (FBA) Workshop**			Behavior Plan Workshop**	
Gem Rooms – 2 <sup>nd</sup> Floor (Concourse Level)						
	Emerald A <i>Leadership</i>	Coaching and Differentiating for Staff**	Everyone Communicates Few Connect**		System Work to Sustain Success: A Deep Look at MTSS**	2:00pm Mints and 4:00pm Scooter Rides
	Emerald B <i>Behavior</i>	Back to the Basics: Classroom Mgt. Strategies**	Let Them Know What's Up or Down**		FAPE in the LRE: The New Blood Borne Pathogens**	
	Pearl <i>Leadership</i>	Hello Lansing!			Equity and Access in Early On®**	
	Ruby <i>Division Meetings</i>	DDEL Division Meeting			Where in the World is MiTED?	
Conference Level – 3 <sup>rd</sup> Floor						
	Berkey <i>Assistive Technology</i>	One Size Does Not Fit All	Assistive Technology: How to Try Before You Buy		8 Things You Didn't Know About Accessibility	The Road Less Traveled – One Team's Journey**
	Grand View A <i>Inclusive Practices</i>	Autism, Motivation and Education**	Building Self Esteem in Students with Disabil. & Autism**		CEC State of the Profession and Federal Policy Work	Teaching with Stress, Poverty and Trauma in Mind**
	Grand View B/C <i>Transition</i>	Goal Attainment and Quality of Life**	From Integration to Belonging: Exploring College**		Health Care Transition for Children/Families**	Creative Funding and Organizational Collaboration
	Haldane <i>Early Childhood</i>	The Revised DEC Position Paper on MTSS in Early Childhood: the Why, the What and the How			Stepping Stones to Learning: LRE in Early Childhood	
	Heritage Hill <i>MDE/Policy</i>	The Journey ZS to B-K: Early Childhood	**Digging Into the Path Forward for Michigan*		Moving From Reactive to Proactive Around Legis.**	
	Kendall <i>Parents/Families &amp; Behavior</i>	Charting the Course to a Good Life**			Special Education Secondary Boys: Case Studies**	Teach the Need Beneath the Challenge
	Nelson <i>Data/Curriculum</i>	What's the Difference & Why Does it Matter?	Coaching: The Missing Piece of the Implementation Puzzle		Using Classroom Data for Fun and Profit: How Teachers Can Collect Data**	We're All in This Together! School Based Wraparound**
	Thornapple <i>Low Incidence</i>	Strengthening Capacity for Dist. and Programs*	From Research to Practice: Teaching Math to Students *		Strengthening Capacity for Dist. and Programs*	From Research to Practice: Teaching Math to Students *
	Winchester	Narrowing the Reading Achievement Gap	Team-Teaching: Reaching Students			Developing a District-wide Autism Program
Dr. Jemelleh Coes – Keynote Speaker • 10:40 – 11:45 • De Vos Place – Ballroom B Lunch (on your own) • 11:45-1:00 • Exhibit Hall – Ambassador Ballroom						

Dr. Jemelleh Coes – Keynote Speaker • 10:40 – 11:45 • DeVos Place – Ballroom B  
Lunch (on your own) • 11:45-1:00 • Exhibit Hall – Ambassador Ballroom

\* Repeated session \*\*Sessions approved for SW-CEs

The Impact of Assistive Technology on Autism Spectrum Disorder: A Systematic Review

Presenters: Angela Bolin, BS, CTRS, Stonecrest Center Behavioral Hospital; Julia VanderMolen, Assistant Professor, Grand Valley State University

The purpose of this research was to review the assistive technology (AT) specific assessment models and instruments that have been developed for children with Autism Spectrum Disorder (ASD) in order to provide an overview of the strategies to be employed in rehabilitation and education. Three electronic databases were searched for peer-reviewed studies investigating children with Autism Spectrum Disorder (ASD) and the use of assistive technology to assist with speech difficulties, little social interaction, and poor motor skills. Relevant studies were independently reviewed and appraised by three reviewers. Methodological quality was quantified using the American Speech-Language-Hearing Association’s levels of evidence. In total, 21 studies were included in the review. We argue that there is a need to develop a more thorough guide for AT professionals in the process of AT assessment for children with Autism Spectrum Disorder.

Topic: Assistive Technology  
Level: Basic

Dyslexia in College-Aged Students

Presenters: Kailah Hardy, Student, Eastern Michigan University; Rhonda Kraai, Ed. D., CCC-SLP, Eastern Michigan University

This project will focus on students who have dyslexia at the college level. Topics include the following: 1) Michigan’s legal stance regarding dyslexia, 2) how it affects educational, home, and social functions, 3) are college students with dyslexia given supports? What kind?, 4) how dyslexia can affect one’s mental state/self-image, 5) how individuals with dyslexia cope, 6) the challenges/obstacles individuals with dyslexia face, 7) the strengths/positives of having dyslexia, 8. IEPs vs. 504 plans and their availability to college students with dyslexia, and 9) What symptoms/challenges still persist at the college level.

Topic: College Students  
Level: Basic

Family Perspectives of a Mentorship Program

Presenters: Holly Hoffman, Professor, Central Michigan University; Theresa Leffert, College Student, Central Michigan University

Twelve families participated in detailed interviews focused on their child’s participation in a mentorship program. Program participants impacted by disabilities were partnered with college student mentors from various areas of academic interests. Impacts on participants and their families are highlighted.

Topic: Early Childhood  
Level: Basic

Helping Students with Anxiety Disorders

Presenter: Alicia Li, Professor, Eastern Michigan University

Anxiety is a normal feeling that everyone has at certain times, but excessive and chronic anxiety impairs the brain’s ability to process information and thus affects cognition and behavior. In this presentation, a brief introduction to anxiety disorder is addressed, followed by strategies and interventions that can relieve anxiety in children and teens.

Topic: Behavior  
Level: Basic

## Friday Poster Sessions

### 1:10pm to 3:10pm • Ambassador Ballroom

#### **Illuminate Words: Motivation and Reading Achievement**

*Presenters: Elizabeth Horton, Assistant Professor, Hope College; Jane Finn, Professor and Department Chair, Hope College*

A mixed methods study was conducted with student participants to evaluate the impact of motivation on the reading achievement of diverse learners. The results indicate that higher levels of motivation predict reading achievement and specific factors that may motivate learners from diverse backgrounds.

*Topic: High Incidence*  
*Level: Basic*

#### **Mobile Technology Devices for Children with Developmental Disabilities: A Systematic Review**

*Presenters: Kaitlin Chauv, Speech-Language Pathology Candidate, Grand Valley State University; Julia VanderMolen, Ph.D., CHES, Grand Valley State University*

The purpose of this review of literature sought to explore the benefits of using mobile technologies as a form of AAC for school-age children with developmental disabilities. Research on mobile devices and the applications available could change the current status of AAC interventions. This literature review stands as an exemplar for the imperative need for exploration of these devices in AAC.

*Topic: Assistive Technology*  
*Level: Basic*

#### **Top Ten Reasons Shared by Early Childhood Special Education Pre-Professionals**

*Presenter: Holly Hoffman, Professor, Central Michigan University*

During this poster session, highlights of various insights from undergraduate college students preparing to work in the field of early childhood and/or special education are outlined. Details include top reasons they are dedicated to this professional field, top reasons they want to make a difference in the lives of children and families, and top lessons learned as they enter this profession.

*Topic: Early Childhood*  
*Level: Basic*

#### **Train-the-Trainer: A Tool for Teaching Classroom Management**

*Presenters: Daphne Snyder, Graduate student, Western Michigan University; Nicole Hollins, MA, BCBA, Western Michigan University, KRESA; Stephanie Peterson, Department Chair, Western Michigan University*

A train-the-trainer model was used to improve transitions and student engagement within the classroom. The teacher was first provided modeling and coaching on how to implement several strategies and then tasked with coaching her staff on the strategies. Overall, there was an increase in appropriate transitions, engagement, and staff morale.

*Topic: Behavior*  
*Level: Basic*

## Friday Sessions: 8:15am - 9:15am

#### **One Size Does Not Fit All: Factors to Consider When Selecting AAC Systems**

*Presenter: Suzanna Ruskusky, AAC Consultant, Kent ISD*

Augmentative and alternative communication (AAC) describes various means of communication that can help people who are unable to use verbal speech to communicate. AAC methods vary and can encompass a range of nonverbal communication methods, from sign language and picture boards to speech-generating apps and devices. Since there is not a "one size fits all" solution, working as a team to support the communication needs of a student is essential. Join me to explore low tech through high-tech systems and tips for getting started.

*Topic: Assistive Technology*  
*Level: Basic*  
*Time: 8:15-9:15 Room: Berkey*

#### **Coaching and Differentiating for Staff Across Disciplines**

*Presenters: Marci Moloney, Program Improvement and Accountability Administrator, LESA; Doug Haseley, Assistant Superintendent of Special Education, LESA*

This presentation will provide learners with strategies for maximizing efficiency with staff participating in a coaching program. Learners will hear about the Livingston Educational Service Agency (LESA) Coaching and Mentoring Program. Additionally, the audience will learn ways to streamline coaching skills among and between multiple disciplines including Teachers, SLPs, SSWs, School Psychologists, OTs, PTs and Consultants.

*Topic: Leadership*  
*Level: Intermediate*  
*Time: 8:15-9:15 Room: Emerald A*

#### **Back to the Basics: Classroom Management Strategies**

*Presenters: Nicole Hollins, MA, BCBA, Western Michigan University, KRESA; Jennifer Sova, Program Administrator of Early Intervention and Special Services, KRESA; Stephanie Peterson, Department Chair, Western Michigan University*

Do you want to reclaim the structure of your classroom? 'Back to the Basics: Classroom Management Strategies' will provide attendees with effective universal strategies that address behavioral challenges and increases overall student engagement. We will discuss how to tailor the strategies to your classroom needs and provide a decision-making model for recruiting additional supports.

*Topic: Behavior*  
*Level: Intermediate*  
*Time: 8:15-9:15 Room: Emerald B*

#### **Data Data Data, I Have Data... Now What?**

*Presenter: Joni Vernia, CEC-S Student Board, MCEC*

An overview of types of data collection will be reviewed in a short presentation. This will be followed by examples of data sheets used to collect information by adults and students independently. The focus of this session will be on behavior.

*Topic: College Students*  
*Level: Basic*  
*Time: 8:15-9:15 Room: Governors*





## Friday Sessions: 8:15am - 9:15am

### Autism, Motivation & Education

*Presenter: Ron Sandison, Presenter with Autism*

Teachers and parents will learn practical methods to motivate students with autism to learn new skills, socialize, and gain independence. Ron examines common hindrances to growth, decision-making, and independence and ways to overcome them. Many students with autism experience anxiety due to their lack of social interaction, a failure complex, perfectionist mindset, and sensory issues. Sandison shares practical insight to overcoming these challenges.

Sandison shares inspiring stories from his interviews throughout his presentation like Armani Williams, the first NASCAR driver with autism, Peter Lantz, a professional video game designer, Tarik El-About a professional baseball player and many more. Ron also shares his academic struggles and lack of motivation from autism and how he was able to overcome and become a dad, author, professional, and motivational speaker.

*Topic: Teaching students with autism & inclusion*  
*Level: Intermediate*  
*Time: 8:15-9:15 Room: Grand View A*

### Goal Attainment and Quality of Life Through Inclusive College for Individuals with Intellectual and Developmental Disability: A Pilot Study

*Presenter: Kate Strater, Assistant Professor, Calvin University*

With growing opportunity for students with IDD to attend college comes need for teachers prepared to support students in non-traditional educational contexts. This pilot study examines goal attainment and quality of life within inclusive college and implications for teacher preparation.

*Topic: Transition*  
*Level: Advanced*  
*Time: 8:15-9:15 Room: Grand View B/C*

### The Journey from ZS to B-K: Early Childhood Endorsement Revision

*Noel Kelty, Early On Manager, Michigan Department of Education; Gina Garner, Higher Education Consultant, Michigan Department of Education*

The MDE has collaborated with stakeholders from across Michigan to build a child-first certification system that prepares effective educators to use differentiated support to meet the needs of the whole child. In this session, presenters will share details about the process and progress of the stakeholder review and revision of the Early Childhood Endorsement into a birth to kindergarten certification.

*Topic: Institutions of Higher Education*  
*Level: Advanced*  
*Time: 8:15-9:15 Room: Heritage Hill*

### What's the Difference and Why Does it Matter So Much? Phonological Awareness, Phonemic Awareness, and Phonics

*Presenter: Katie Hodgkins, Director of Instruction, Orton-Gillingham Brainspring Educator Academy*

Phonological and phonemic awareness skills are essential components of any effective reading instruction, according to the National Reading Panel. Both are also the root of difficulty for many struggling readers and those with dyslexia. Phonemic awareness skills, specifically the ability to blend and segment phonemes, are essential pre-reading skills all students need. A related finding states that phonological awareness is the number one indicator of success in beginning reading. Developing these skills in students with dyslexia is especially important because dyslexia is rooted in the phonological module of the brain, where words are broken into individual sounds and sounds are assembled into words. With the knowledge that all words are stored through auditory means, cognitive scientists such as Wolf, Katzir-Cohen and Kilpatrick have shown, it is the ability to be both accurate and automatic in these sub-skills that allows a reader to work towards reading fluently.

*Topic: Curriculum*  
*Level: Intermediate*  
*Time: 8:15-9:15 Room: Nelson*

## Friday Sessions: 8:15am - 9:15am

### Strengthening Capacity for Districts and Programs to Provide High Quality Math Instruction to Students with Significant Disabilities

*Presenter: Kate Fanelli, Coordinator, Alt+Shift; Darnella Delphine, ASD Consultant, Wayne RESA; Patricia Silveri, Manager of Act 18 programs, Wayne RESA*

Participants will learn about practices that support implementation of math instruction for students with significant disabilities; Wayne RESA's experience with implementation as an Alt+Shift partner (Alt+Shift is a statewide project that partners with ISDs to implement promising practices for students with disabilities); and suggestions for organizations beginning to implement meaningful mathematical change for students.

*Topic: Low Incidence*  
*Level: Basic*  
*Time: 8:15-9:15 Room: Thornapple*

### Division for Culturally and Linguistically Diverse Exceptional Learners (DDEL- Michigan) Annual Meeting

*Precios Armstrong, Special Education Supervisor, Jackson County Intermediate School District*

DDEL is one of the special interest groups of the Michigan Council for Exceptional Children (MCEC), the largest international professional organization dedicated to improving educational outcomes for individuals with exceptionalities, including students with disabilities and those identified as gifted. DDEL advances educational opportunities for culturally and linguistically diverse learners with disabilities and/or gifts and talents, their families, and the professionals who serve them. It is the only professional organization dedicated exclusively to the concerns of culturally and linguistically diverse exceptional learners. This division meeting will showcase DDEL and solicit engagement from current and future members. YOU can directly impact our next steps.

*Topic: DDEL - MI Division Meeting*  
*Level: Basic*  
*Time: 8:15-9:15 Room: Ruby*

### Narrowing the Reading Achievement Gap for English Learners with Disabilities

*Presenters: Elizabeth Horton, Assistant Professor, Hope College; Jane Finn, Professor and Department Chair, Hope College*

A single-subject multiple probe study was used to address the reading achievement gap with high school English learners with disabilities. The participants learned to summarize expository passages through the use of a reading comprehension strategy. The results indicate that all participants improved in the ability to comprehend and summarize text.

*Topic: High Incidence*  
*Level: Intermediate*  
*Time: 8:15-9:15 Room: Winchester*



## Friday Sessions: 8:15am - 10:25am

### The Revised DEC Position Paper on MTSS in Early Childhood: The Why, The What, and The How

*Presenter: Elaine Tadjewski, Compliance Consultant, Oakland Schools*

With the guidance and recommendations made in this paper, professionals in both early childhood and early childhood special education will be able to establish effective intervention practices at a state and local level to ensure high-quality systems are put in place initially or current practices revised with regard to MTSS. This, in turn, will enable practitioners to provide the most effective strategies resulting in positive outcomes for all young children.

*Topic: Early Childhood*  
*Level: Intermediate*  
*Time: 8:15-10:25 Room: Haldane*

### Charting the Course to a Good Life

*Presenters: Tracy Vincent, Resource Analyst, Michigan Developmental Disabilities Council; Tedra Jackson, Grant Manager, Michigan Developmental Disabilities Council*

Do you believe all people have the right to live, love, work, play and pursue their life aspirations in their community? If so, we invite you to join us as we provide an introduction to Charting the LifeCourse, a framework designed by and for individuals and families at any age or stage of life to think about what they need to know, identify how to find or develop supports, and discover what it takes to live the lives they want to live. We will demonstrate how three tools developed from the framework can be used to have meaningful conversations with individuals to plan for present and future life outcomes that take into account all facets of life and have life experiences that build on self-determination, social capital, economic sufficiency and community inclusion.

*Topic: Parents and Families*  
*Level: Basic*  
*Time: 8:15-10:25 Room: Kendall*

### Hello Lansing!

*Presenters: Mark King, Director of Compliance and Technical Assistance, Ottawa Area ISD; Carolyn Smith Gerdes, Assistant Director of Special Education, Muskegon Area ISD, Muskegon Area ISD*

The goal of this presentation is to help educators powerfully influence their legislators around students with disabilities and their educational needs. Attendees will be provided with advocacy strategies and tips, and have time to reflect on how they might begin their advocacy journey.

*Topic: Legislative Action and Advocacy*  
*Level: Basic*  
*Time: 8:15-10:25 Room: Pearl*

### Functional Behavior Assessment (FBA) Workshop

*Presenter: Lisa Drumb, Assistant Teaching Professor of Special Education, Marian University*

During this session, participants will learn the essential components of an FBA. Next, participants will analyze data collected from a real-life scenario. Lastly, the participants will work with the presenter to develop each component of the FBA. The objective is for each participant to leave the session with a completed FBA from a real-life scenario.

*This session is Conference Chair Endorsed*

*Topic: Behavior*  
*Level: Basic*  
*Time: 8:15-10:25 Room: Vandenberg B*



## Friday Sessions: 9:25am - 10:25am

### Assistive Technology - How to Try Before You Buy

*Presenter: Ashley Rust, Project Support/Lending Librarian, Alt+Shift*

This will be a guide on how Michigan public school educators can access the Alt+Shift lending library to try assistive technology for their students. Participants will learn how to use the library, hear success stories of other library users, and play with a few AT devices.

*Topic: Assistive Technology*  
*Level: Basic*  
*Time: 9:25-10:25 Room: Berkey*

### Everyone Communicates Few Connect: Building Strong Relationships to Ensure Student Success in the Learning Environment!

*Presenter: Concetta Lewis, Executive Director of Special Education, Rochester Community Schools*

To have positive student outcomes we must make genuine connections. Every encounter is an opportunity for a powerful and engaging connection. This session will share principles to enhance connections with students, parents and team members, including finding common ground, keeping communication simple, and being authentic.

*Topic: Leadership*  
*Level: Basic*  
*Time: 9:25-10:25 Room: Emerald A*

### Let Them Know What's up...or Down: Using Graphs to Increase and Maintain Teachers' Use of Behavior Specific Praise

*Presenters: Carly Schroeder-MacKay, Doctoral Student, Western Michigan University; Rena VanDerwall, Doctoral Student, Western Michigan University*

We will present evidence of an efficient intervention implemented in a school setting to increase teachers' use of behavior specific praise statements. We utilized a tiered approach to professional development to support teacher growth.

*Topic: Behavior*  
*Level: Intermediate*  
*Time: 9:25-10:25 Room: Emerald B*

### Educator, Know Thyself

*Presenter: Cathy White, Assistant Professor, Lake Superior State University*

This interactive session will provide an overview of Adverse Childhood Experiences (ACEs), mindfulness, and how your own ACE score may impact you as a teacher. Participants will explore mindfulness techniques and start a plan for self care.

*Topic: College Students/Educators: Self-Care*  
*Level: Basic*  
*Time: 9:25-10:25 Room: Governors*

### Building Self-Esteem in Students with Disabilities and Autism

*Presenter: Ron Sandison, Presenter with Autism*

Teachers and parents will gain insight for building self-esteem in students with autism and learning disabilities by creating a hope complex. Empowering your students to overcome all or nothing thinking, learn to regulate emotions and express feelings, confidence in decision-making, handle sensory issues, and freedom from obsessive thoughts and compulsive behaviors. Professionals and parents will learn the impact of emotional memories on a child with autism and how to help students develop skills for maintaining healthy relationships. Ron will share his journey with autism and the power of self-efficacy to accomplish his goals.

*Topic: Parents and Families*  
*Level: Intermediate*  
*Time: 9:25-10:25 Room: Grand View A*

### From Integration to Belonging: Exploring College with Young Adults with Intellectual and Developmental Disability

*Presenter: Kate Strater, Assistant Professor, Calvin University; Emily Perton, Executive Director, Ready for Life*

Calvin University and Ready for Life (RFL) are committed to providing inclusive post-secondary education and campus life experiences for students with intellectual and developmental disabilities. We will share insights into the RFL Academy and show how we are growing to support students as they transition to adult life.

*Topic: Transition*  
*Level: Advanced*  
*Time: 9:25-10:25 Room: Grand View B/C*



## Friday Sessions: 9:25am - 10:25am

### Digging into the "Path Forward" for Michigan

*Presenter: Abby Cypher, Lobbyist/Government Relations, Michigan Association of Administrators of Special Education (MAASE)*

In July of 2018, the state of Michigan was issued a determination of "Needs Intervention" for special education. A large stakeholder group, led by MDE, formulated a well thought out "Path Forward" to better outcomes for students with disabilities. This work has officially begun! Please join us for a progress report and find out how you can get involved.

Topic: Leadership  
Level: Basic  
Time: 9:25-10:25 Room: Heritage Hill

### Special Education on the Front Line

*Presenter: Robert Dietzel, Attorney, Thrun Law Firm, P.C.*

Thrun Law Firm attorney Rob Dietzel will discuss legal requirements that all front-line special education personnel should understand, including such things as required IEP team participants, proper use of prior written notice, writing meaningful and measurable goals, and ensuring IEP implementation. The presentation will also address common misconceptions and pitfalls to avoid.

*This session is Conference Chair Endorsed*

Topic: Law  
Level: Intermediate  
Time: 9:25-10:25 Room: Imperial

### Coaching: The Missing Piece of the Implementation Puzzle

*Presenters: Carolyn O'Hearn, AT/AAC Specialist, Alt+Shift; Lori Seagraves, Speech Language Pathologist, Clinton County RESA*

How do schools move from training to implementation of content? Research indicates that without coaching, effective innovations are often abandoned. Dialogical coaching (i.e., as partners) is crucial to support colleagues navigate through the five stages of implementation. This session focuses on how to apply effective coaching strategies to assistive technology and augmentative and alternative communication (AT/AAC) implementation efforts, as well as the impact of dialogical coaching.

Topic: Leadership  
Level: Basic  
Time: 9:25-10:25 Room: Nelson

### From Research to Practice: Teaching Math to Students with Significant Disabilities

*Presenters; Kate Fanelli, Coordinator, Alt+Shift; Darnella Delphine, ASD Consultant, Wayne RESA*

All students can and should learn mathematics. Participants will learn research on teaching math to students with significant disabilities and view examples that show how math assessment and instruction can look for students in self-contained and center-based programs.

Topic: Low Incidence  
Level: Basic  
Time: 9:25-10:25 Room: Thornapple

### Team-Teaching: Reaching Students With and Without Disabilities

*Jane Finn, Professor and Department Chair, Hope College; Hannah Hess, Undergraduate Research Fellow, Hope College; Avery Massie, Undergraduate Research Fellow, Hope College*

A study was completed to identify benefits of different types of co-teaching models in a secondary mathematics class to students with and without disabilities thus promoting greater inclusion for students identified as exceptional in the general education setting.

Topic: High Incidence  
Level: Intermediate  
Time: 9:25-10:25 Room: Winchester



## Friday Sessions: 1:10pm - 2:10pm

### Health Care Transition for Children and Families with Complex Medical Needs

*Presenters: Terra Depew, Transition Specialist, MDHHS, CSHCS; Lonnie Barnett, Division Director, MDHHS, CSHCS; Aleisha Leavitt, Parent Consultant, The Family Center for Children and Youth with Special Health Care Needs*

Transition in health care for young adults with special health care needs is a challenging and highly individual process. Children's Special Health Care Services (CSHCS) panelists will discuss the components of health care transition, provide insight on how families and young adults can navigate complex health care systems, and offer several supports available to families through the Family Center for Children and Youth with Special Health Care Needs (Family Center). Participants will gain a better understanding of how health care transition intersects transition planning that is occurring in the educational system.

Topic: Transition  
Level: Basic  
Time: 1:10-2:10 Room: Grand View B/C

### Stepping Stones to Learning: LRE in Early Childhood

*Presenters: Marlo Belfuri, Early Childhood Teacher Consultant, Port Huron Schools; Angela Tucker, Occupational Therapist, Port Huron Area School District; Lori Vezina, Physical Therapist, St. Clair County RESA; Lisa Kolman, Early Childhood Special Education Teacher, Port Huron Area School District; Katherine Patterson, Speech-Language Pathologist, Port Huron Area School District; Trisha, Adams, GSRP Inclusion Teacher, Port Huron Schools*

Port Huron School District is excited to share its successes in expanding LRE options in its early childhood program. They offer a mini-preschool program for 2.5-4 year olds, inclusive GSRP classrooms with ECSE teacher and paraprofessional support, full-day ECSE placement, and joint gross motor play sessions and exploration opportunities.

Topic: Early Childhood  
Level: Intermediate  
Time: 1:10-2:10 Room: Haldane

### 8 Things, You Didn't Know About Accessibility!

*Presenter: Gayle Evans, Assistive Technology Consultant, Allegan AESA*

Our students are exposed to various technologies throughout their school career. Typically iPads in early years, Chrome Books in middle and high school years and quite possibly Window laptops at home or in public settings (libraries). The good news is, no matter which hardware they use, and no matter what their ability is, there are built-in free tools that they can use to help them with reading, writing and even math as well as blue tooth options for switch accessibility for iPads and laptops. Come find out what is new in iPads (iOS 13), Chrome Extensions and Microsoft Windows (Immersion reader, Dictation, Math support).

Topic: Assistive Technology  
Level: Intermediate  
Time: 1:10-2:10 Room: Berkey

### System Work to Sustain Success: A Deep Look at MTSS

*Presenter: Mackenzie Sheahan, MTSS District Coordinator, Portage Public School District*

Discover how multi-tiered systems of support exist to execute and continuously improve systems that support your district's mission and vision. MTSS is a way of doing business and creates sustainable systems for ALL. Walk away with the essential components of MTSS and tangible next steps in system work.

Topic: Leadership  
Level: Intermediate  
Time: 1:10-2:10 Room: Emerald A

### CEC State of the Profession and Federal Policy Work

*Presenters: Chad Rummel, CEC Executive Director; Jennifer Lesh, CEC President*

Join the 2020 CEC President and Executive Director to learn about the state of the profession, from the organization's recent survey, and what CEC is doing to represent members on Capitol Hill. This collaborative discussion will include gathering input for how to move the field forward.

*This session is Conference Chair Endorsed*

Topic: Leadership  
Level: Basic  
Time: 1:10-2:10 Room: Grand View A

Friday Sessions: 1:10pm - 2:10pm

Moving from Reactive to Proactive  
Around Legislative Issues

Presenter: Abby Cypher, Lobbyist/Government Relations, Michigan Association of Administrators of Special Education (MAASE)

Have you been wondering what is on the horizon around legislation at the state and national level? Are you interested in learning how to track this information on a daily basis to stay informed? Would you like to become more active in providing input on legislation but don't now how? If so, join us to discuss this important topic.

Topic: Legislative Action- Government Relations  
Level: Basic  
Time: 1:10-2:10 Room: Heritage Hill

Special Education Secondary Boys:  
Case Studies of School Failure and Life Success

Presenter: Derrick Fries, Professor, Eastern Michigan University

Boys behavior in secondary school is always a changeling issue. Each Assistant Principal could write a book on stories of special education boys executive decision failures in middle and high school. This presentation reviews large interventions that have worked and failed....but ultimately changed lives forever.

Topic: Institutions of Higher Education  
Level: Advanced  
Time: 1:10-2:10 Room: Kendall

Using Classroom Data for Fun and Profit:  
How Teachers Can Collect Data to Promote  
Positive Student Behavior, Even if They Have  
Other Things to do, Like Teach

Presenter: Nicholas Lauer, Professor, Oakland University; Jessica Korneder, Assistant Professor, Oakland University

This presentation will discuss practical data collection in the classroom with the emphasis on why data is so important, how teachers can collect data (even if they have other things to do, like teach!) and what to do with the data to promote behavior change.

Topic: Behavior  
Level: Basic  
Time: 1:10-2:10 Room: Nelson

Where in the World is MiTED?

Presenter: Monica Harris, MiTED President & TED Liaison, Grand Valley State University

MiTED needs a President! The vision of the organization is to bring together faculty and researchers of teacher preparation from across the state. To increase the equity among and advocacy knowledge of our future educators.

Topic: Institutions of Higher Education  
Level: Basic  
Time: 1:10-2:10 Room: Ruby

Strengthening Capacity for Districts and Programs  
to Provide High Quality Math Instruction  
to Students with Significant Disabilities

Presenters: Kate Fanelli, Coordinator, Alt+Shift; Darnella Delphine, ASD Consultant, Wayne RESA; Patricia Silveri, Manager of Act 18 programs, Wayne RESA

Participants will learn about practices that support implementation of math instruction for students with significant disabilities; Wayne RESA's experience with implementation as an Alt+Shift partner (Alt+Shift is a statewide project that partners with ISDs to implement promising practices for students with disabilities); and suggestions for organizations beginning to implement meaningful mathematical change for students.

Topic: Low Incidence  
Level: Basic  
Time: 1:10-2:10 Room: Thornapple

What's the Point of a Point Sheet:  
10 Common Mistakes & Suggestions for Improvement

Presenters: Rena VanDerwall, Doctoral Student, Western Michigan University; Sarah Summy, Professor, Western Michigan University

Point sheets, in various forms, have been used for students with challenging behaviors for years. However, there is a weak literature base for this practice. Who are point sheets for? Students? Teachers? This presentation will review the literature and provide a framework for using this intervention.

Topic: Behavior  
Level: Basic  
Time: 1:10-2:10 Room: Vandenberg A

Friday Sessions: 1:10pm - 3:20pm

FAPE in the LRE: The New Bloodborne Pathogens

Presenters: Stephanie Dyer, Professional Learning Content Specialist, MIBLSI / START; Kelly Rogers, Autism Education & Intervention Specialist, BCBA, START (STatewide Autism Resources & Training)

What are a Free Appropriate Public Education (FAPE) and the Least Restrictive Environment (LRE) really all about? Inherent in these IDEA foundational requirements is the right of students with disabilities to access the same educational opportunities as their non-disabled peers in a way that confers meaningful educational benefit and enables progress on appropriately ambitious goals. Because FAPE in the LRE is foundational to the education of students with disabilities and the development of the IEP, we advocate that all staff should receive training every year on the relevant law and research in this area, similar to the yearly requirement for Bloodborne Pathogens training. This session will outline key components for participants own learning and for staff professional development.

Topic: Behavior  
Level: Basic  
Time: 1:10-3:20 Room: Emerald B

Equity & Access in Early On®

Presenters: Tami Mannes, Director of Early Childhood, OAISD; Deana Strudwick, Director, St. Joseph County ISD

This presentation will focus on systems change components in the early intervention system, which will allow greater equity across the state of Michigan, for the youngest learners to gain access to early intervention providers and services.

Topic: Policy and Advocacy  
Level: Intermediate  
Time: 1:10-3:20 Room: Pearl

Behavior Plan Workshop

Presenter: Lisa Drumb, Assistant Teaching Professor of Special Education, Marian University

Participants will discuss and analyze the various components of a behavior plan and the importance of each. Next, participants will work with the presenter in a workshop setting to develop a function-based behavior plan.

Topic: Behavior  
Level: Basic  
Time: 1:10-3:20 Room: Vandenberg B





Friday Sessions: 2:20pm - 3:20pm

The Road Less Traveled – One Team’s Journey with AAC

Presenters: Carolyn O’Hearn, AT/AAC Specialist, Alt+Shift; Jennifer Osborn, Speech Language Pathologist, Sanilac ISD

When embarking on a new journey, unexpected detours are bound to arise along the way. Join us while we examine one ISD’s augmentative and alternative communication (AAC) journey with PODD (a low-tech communication book) and how implementation has evolved three years later. By developing a plan and involving all stakeholders (e.g., teachers, paraprofessionals, administrators, and ancillary staff), implementation success is possible.

Topic: Assistive Technology  
Level: Intermediate  
Time: 2:20-3:20 Room: Berkey

2:00 p.m. Mints & 4:00 p.m. Scooter Rides: How a School Psychologist and an Elementary School Principal Worked Together to Maintain Positivity, Promote Teamwork, and Improve Special and General Education Staff Collaboration in Today’s World of Education

Presenters: Drew Towlerton, Principal, Orion Oaks Elementary School, Lake Orion Community Schools; Alison Gilreath, Psychologist, Orion Oaks Elementary School, Lake Orion Community School

Join School Psychologist Alison Gilreath and Principal Drew Towlerton as they explain how they bridged the gap between special and general education staff to change the culture and raise student achievement in the largest Title I building in their district. Through a review and revamp of their building’s Student Support Team and Student Data Team process, and an explanation of the implementation of a Positive Behavioral Intervention and Support system, join the team as they explain how they created a culture that supported high achievement for all students and developed a supportive, collaborative culture for all staff in the building.

Topic: Leadership  
Level: Intermediate  
Time: 2:20-3:20 Room: Emerald A

Make it Take it - the Tools You Need!

Presenter: Joni Vernia, CEC-S Student Board, MCEC

The MCEC Student Board’s annual make-it take-it session is all about tools for you and your students! Attend this session to leave the conference with universal strategies, tips for classroom management, evidence-based resources, digital website/portfolio tips, and content related stations!

Topic: College Students  
Level: Basic  
Time: 2:20-3:20 Room: Governors

Teaching with Stress, Poverty, and Trauma in Mind

Presenter: Maurice Moses, Limited Licensed Behavior Psychologist, Community Based Intervention Consultants, Inc.

- This presentation will include the following topics:
1. Neurobiology of Childhood Trauma and Stress - the negative impact on childhood growth and development.
  2. Understanding the impact of biological, social, environmental, nutritional, healthcare, epigenetics, chronic stress, poverty, and trauma. The adverse effects these variables have on cognitive, psychological, social, emotional, self-regulation - growth and development.
  3. Utilizing brain based strategies to expedite and expand the process of neuro-plasticity - the use of repetitive thinking (problem solving, analyzing, summarizing, synthesizing), sensory activation, motor movement, structured observational learning, mindfulness relaxation exercises to calm and regulate internal mood states.
  4. Research-based strategies to support students who have been traumatized - brain-compatible instructions and behavior intervention strategies.

Topic: Behavior  
Level: Basic  
Time: 2:20-3:20 Grand View A

Friday Sessions: 2:20pm - 3:20pm

Creative Funding and Organizational Collaboration to Provide Successful Youth Transition Programming

Presenters: Kristen Conrad, L.M.S.W Transition Manager Disability Network Northern Michigan, Disability Network; Mimi Kinney, Transition Coordinator, TBA ISD; Wesley Cross, Rehabilitation Counselor, Michigan Rehabilitation Services

Disability Network Northern Michigan (DNNM) has been successfully providing youth transition programming for over 15 years through collaborative relationships with local ISD’s and vocational rehabilitation services (MRS and BSBP). These partnerships have allowed the programs to thrive, growing from 30 students in its first year to over 800 students in 2018/2019. This presentation will provide attendees with information and advice for establishing and maintaining successful collaborative relationships with community partners and strategies for effective program implementation. Our presenters consist of professionals from DNNM, local ISDs, and Vocational Rehabilitation (MRS), allowing our team to provide insight from the perspectives of each partner.

Topic: Transition  
Level: Intermediate  
Time: 2:20-3:20 Room: Grand View B/C



Teach the Need Beneath The Challenge: Designing Beyond Disruption

Presenter: Margina Cohen, Education Advocate, Strategic Educational Solutions

Don’t allow discipline to devour your instructional time. Learn techniques and strategies you can use to teach your students acceptable behavior in a relatively short period of time so you can spend valuable classroom time doing what you do best...Teaching!

Topic: Behavior  
Level: Advanced  
Time: 2:20-3:20 Room: Kendall

We’re All In This Together! - School Based Wraparound

Presenter: Heather Martinez-Varieur, Special Education Supervisor, Wayne Westland Community School District

How many of your students could benefit from wraparound supports? It’s time to be proactive and provide those supports in our schools. Come and see how we started doing just that with some of our teams. Learn about the necessary data tracking, who to involve, when to meet, what to discuss, and more.

Topic: Behavior  
Level: Basic  
Time: 2:20-3:20 Room: Nelson

From Research to Practice: Teaching Math to Students with Significant Disabilities

Presenters: Kate Fanelli, Coordinator, Alt+Shift; Darnella Delphine, ASD Consultant, Wayne RESA

All students can and should learn mathematics. Participants will learn research on teaching math to students with significant disabilities and view examples that show how math assessment and instruction can look for students in self-contained and center-based programs.

Topic: Low Incidence  
Level: Basic  
Time: 2:20-3:20 Room: Thornapple

# Friday Sessions: 2:20pm - 3:20pm

## A Balancing Act: Working with Kids with Behavior Difficulties

Presenters: Christine Rushlow, Special Education Teacher, Plymouth Canton Community Schools; Shellie McCotter, Special Education Teacher, Plymouth Canton Education Association

Walk away with over 10 tips you can try tomorrow to manage behavior. Understand the core functions of all behaviors. In the end, be reminded of what is in and what is out of your circle of control.

Topic: Behavior  
Level: Basic  
Time: 2:20-3:20 Room: Vandenberg A

## Developing a Districtwide Autism Program: A Training Model for Serving Students With ASD

Presenter: Kathryn Morrow, Autism Training Specialist, STAR Autism Support

This session will provide an overview of the essential elements needed to provide effective, evidence-based programs and strategies for students with ASD across the age range. Learn how several state and local agencies have developed a sustainable model of professional development to ensure staff implement effective practices with fidelity.

Topic: Low Incidence  
Level: Advanced  
Time: 2:20-3:20 Room: Winchester



# 2020 MCEC Conference Presenters

Abraham, Smriti  
abrahasm@mail.gvsu.edu

Adams, Trisha  
tadams@phasd.us

Adorjan, Krystie  
krystie.adorjan@jcisd.org

Ansley, Brandis  
ansle1b@cmich.edu

Armstrong, George  
armstrong.ge.t@petoskeyschools.org

Armstrong, Precios  
precios.armstrong@jcisd.org

Ball, John  
john.ball@celebratehopellc.com

Bancroft, Briana  
briana.bancroft@altshift.education

Barnett, Lonnie  
barnettL@michigan.gov

Barton, David  
bartond@aaps.k12.mi.us

Behncke, Sarah  
sarah.behncke@jcisd.org

Belcher, Chelsey  
belch1ck@cmich.edu

Belfuri, Marlo  
mbelfuri@phasd.us

Bernick, Chris  
bernickchris@gmail.com

Billings, Dana  
billingsd1@michigan.gov

Blomberg, Susan  
susan.blomberg@royaloakschools.org

Bollin, Angela  
bollina@mail.gvsu.edu

Brewer, Kelsey  
KBrewer@giresd.net

Brown, Selena  
brownsel@mail.gvsu.edu

Bugajski, Kellie  
kellie.a.bugajski@gmail.com

Bullinger, Jordan M.  
jbullinger@clarkhill.com

Chapman, Teri  
chapmant2@michigan.gov

Chauv, Kaitlin  
chauvka@mail.gvsu.edu

Cohen, Margina  
margina@marginacohen.com

Collier, Kristina  
CollierK1@michigan.gov

Conrad, Kristen  
kristen@disabilitynetwork.net

Cook, Daisy  
dcook@ioniaisd.org

Croel, Ben  
bcroel@ioniaisd.org

Cross, Wesley  
crossw@michigan.gov

Cypher, Abby  
aim.abbycypher@gmail.com

D'Agostino, Sophia  
dagostino@hope.edu

Decker, Dawn  
dawn.decker@cmich.edu

Delfine, Darnella  
DelfinD@resa.net

Depew, Terra  
depewt@michigan.gov

Dietzel, Robert  
rdietzel@thrunlaw.com

Douglas, Sarah  
sdouglas@msu.edu

Drumb, Lisa  
Ldrumb@yahoo.com

Dyer, Stephanie  
sdyer@miblsimtss.org



2020 MCEC Conference Presenters

Evans, Gayle gayle.evans@alleganaesa.org	Hodgkins, Katie katie.hodgkins@brainspring.com
Fachting, Mallari mfachting@cgresd.net	Hoffman, Holly gerki1hh@cmich.edu
Fanelli, Kate kate.fanelli@altshift.education	Hollins, Nicole nicole.a.hollins@wmich.edu
Finn, Jane Finn@hope.edu	Hoogenstyn, Jason jhoogenstyn@nvps.net
Foster, Melanie melanie.foster@berrienresa.org	Horton, Elizabeth horton@hope.edu
Fries, Derrick dfries@emich.edu	Jackson, Tedra jacksont7@michigan.gov
Garner, Gina garnerg@michigan.gov	James, Vicky jamesv@aaps.k12.mi.us
Gembis, Kristin kristin.gembis@royaloakschools.org	Janecke, Nan nan.janecke@wmich.edu
Gilreath, Alison alison.gilreath@lok12.org	Jensen, Tammie tjensen@phasd.us
Goyette, Lisa lisa.goyette@celebratehopellc.com	Kelty, Noel keltyn@michigan.gov
Gruber, David info@Mikids1st.org	King, Mark mking@oaisd.org
Gulian, Armen armen.gulian@royaloakschools.org	Kinney, Mimi mkinney@tbaisd.org
Hardy, Kailah khardy11@emich.edu	Klavon, Michael mklavon@oaisd.org
Harms, Tyler tyler.harms@spartaschools.org	Kolman, Lisa lkolman@phasd.us
Harris, Monica harrismo@gvsu.edu	Korneder, Jessica korneder@oakland.edu
Haseley, Doug doughlashaseley@livingstonesa.org	Kraai, Rhonda rkraai@emich.edu
Heroux, JoDell heroux1jr@cmich.edu	LaDuke, Kerri kladuke@misd.net
Herron, Chelsea cherron@cgresd.net	Lantzy, Stacy slantzy@inghamisd.org
Hess, Hannah hannah.hess@hope.edu	Lauer, Nicholas lauer2@oakland.edu

2020 MCEC Conference Presenters

Leavitt, Aleisha leavittA1@michigan.gov	McDermott, Maria maria.mcdermott@fpsk12.net
Leffert, Theresa leffe1tm@cmich.edu	Mills, Elisabeth elisabeth.mills@jcisd.org
Lesh, Jennifer president@cec.sped.org	Mix, Abbey abbeymix@kentisd.org
Levine, Cheryl cheryl.levine@mikids1st.org	Molino, Rita ritasell3@yahoo.com
Lewis, Concetta concettalewis@gmail.com	Rummel, Chad chadr@cec.sped.org
Lewis, Heather 72.hlewis@nhaschools.com	Moloney, Marci marcimoloney@livingstonesa.org
Li, Alicia tli@emich.edu	Moore, Nichole nmoore.mcec@gmail.com
Littleton, Kanika kanika@michiganallianceforfamilies.org	Morrow, Kathryn kathryn.morrow@starautismsupport.com
Lose, Mary lose@oakland.edu	Moses, Maurice mauricemoses57@gmail.com
Lóser, Jim jloser@ioniaisd.org	Ogilvie, Candis candis.depalma@gmail.com
Lupro, Kaitlyn 72.klupro@nhaschools.com	O'Hearn, Carolyn carolyn.ohearn@altshift.education
Lusk, Robert rlusk@luskalbertson.com	Oles, Hayley oles1he@cmich.edu
Lynch, Lynette lynette.lynch@jcisd.org	Ortiz, Leah leah@thearccalhoun.org
Mannes, Tami tmannes@oaisd.org	Osborn, Jennifer josborn@sanilacisd.org
Martinez-Varieur, Heather pbham143@gmail.com	Owen-DeSchryver, Jamie owendesj@gvsu.edu
Massie, Avery avery.massie@hope.edu	Owens, Pamela pam4oh@gmail.com
Massingill, Rochelle rochellerodie@yahoo.com	Park, Tyler tyler.park@berrienresa.org
McCormick, Kalina kmccormick@sjschools.org	Parker, Carolyn CParker@giresd.net
McCotter, Shellie shellie.mccotter@pccsk12.com	Patterson, Katherine kpatterson@phasd.us

## 2020 MCEC Conference Presenters

Pericolosi, Sara  
sara.pericolosi@altshift.education

Perton, Emily  
emily.perton@rflnetwork.org

Peterson, Stephanie  
stephanie.peterson@wmich.edu

Pickett, Linda  
pickettl@gvsu.edu

Radu, Sarah  
radus@michigan.gov

Reddick, Rynne  
reddi2r@cmich.edu

Reissner, Laura  
lreissne@nmu.edu

Robbins, Jennifer  
jennifer.robbs@berrienresa.org

Rogers, Kelly  
rogekell@gvsu.edu

Rulison, Stacie  
rulisons@michigan.gov

Rushlow, Christine  
christine.rushlow@pccsk12.com

Ruskusky, Suzanna  
suzannaruskusky@kentisd.org

Rust, Ashley  
ashley.rust@altshift.education

Sandison, Ron  
sandison456@hotmail.com

Schroeder-MacKay, Carly  
carly.k.schroeder@wmich.edu

Schultz, Kelly  
kelly.schultz@wmich.edu

Seagraves, Lori  
seagraves\_l@ccresa.org

Segovia, Kindy  
kindysegovia@kentisd.org

Sheahan, Dr. Mackenzie  
msheahan@portageps.org

Sherwood, Kari  
karisher@umich.edu

Shy, Shannon  
shannonshy@livingstonesa.org

Silveri, Patricia  
SilverP@resa.net

Smith Gerdes, Carolyn  
csgerdes@muskegonisd.org

Snyder, Daphne  
daphne.e.snyder@wmich.edu

Sova, Jen  
jennifer.sova@kresa.org

Strater, Kate  
ks84@calvin.edu

Strudwick, Deana  
dstrudwick@sjcisd.org

Stuchell, Elizabeth  
estuch@med.umich.edu

Stump, Danya  
danya.stump@fpsk12.net

Sturm, Janet  
sturm1j@cmich.edu

Summy, Sarah  
sarah.summy@wmich.edu

Tadajewski, Elaine  
Elaine.Tadajewski@oakland.k12.mi.us

Tans, Lynnelle  
lynnelle.tans@jcisd.org

Thelen, Renee  
rthelen@ioniaisd.org

Thomas, Charles  
thomasc29@michigan.gov

Tobey, Beth  
Beth.tobey@hillsdale-isd.org

Towlerton, Drew  
andrew.towlerton@lok12.org

Tucker, Angela  
atucker@phasd.us

## 2020 MCEC Conference Presenters

VanderMolen, Julia  
vandjul1@gvsu.edu

VanDerwall, Rena  
renavanderwall@gmail.com

Vernia, Joni  
joni.vernia@gmail.com

Vernia, Linda  
lvernia@aol.com

Vezina, Lori  
lvezina@phasd.us

Vincent, Tracy  
vincentt1@michigan.gov

Washburn, Kiersten  
washb1kb@cmich.edu

Wentworth, Joe  
joe@praediumrealty.org

Wheatley Hagemann, Diana  
Dwheatley@newhaven.misd.net

White, Cathy  
cwhite9@lssu.edu

White, Kristen  
krwhite@nmu.edu

Wieger, Rebecca  
rwieger@inghamisd.org

Wolf, Michael  
wolfm@charemisd.org

Wolfe, Jordan  
wolfe3jl@cmich.edu

Zangara, Laura  
laura.zangara@mikids1st.org



Thanks for attending the 80th Annual MCEC Conference - see you next year!!



## 2020 MCEC Conference Exhibitors

Adrian Public Schools  
Culley, Nikki  
nculley@adrian.k12.mi.us

Alt+Shift  
Barry, Cheryl  
cheryl.barry@altshift.education

Autism Centers of Michigan  
Cipa, Macrina  
macipa@autismcentersmi.com

BRAINS  
Mullennix, Delaney  
dmullennix@brainspotential.com

CCRESA Office of Innovative Projects  
Koenigsknecht, Jennifer  
jkoenigsknecht@ccresa.org

CEC Bookstore  
Harrison, Judy  
judyh@cec.sped.org

Celebrate Hope LLC  
Ball, John  
john.ball@celebratehopellc.com

Central Michigan University  
Heroux, JoDell  
herou1jr@cmich.edu

Children's Speech & Language Teletherapy Inc.  
Sykes, Douglas  
dsykes@cslti.org

Concordia University  
Lane, Vanessa  
vanessa.lane@cuaa.edu

DeafBlind Central: Michigan's Training & Resource Project  
Kennedy, Beth  
Beth.Kennedy@cmich.edu

Discovery Toys  
Cooke, Cathy  
cat51273@aol.com

Eastern Michigan University  
Frierson-Haynes, Chaundra  
chaundra.frierson-haynes@apdegrees.com

Grand Canyon University  
Yazzie, Ron  
Ron.Yazzie@gce.com

Grand Rapids Public Schools  
Swartz, Nicholas  
swartzn@grps.org

Grand Valley State University  
McConnell-Brown, Denise  
mcconnnde@gvsu.edu

Kent ISD - AT Playground  
Segovia, Kindy  
kindysegovia@kentisd.org

Lansing School District  
Holiness, Unaa  
Unaa.Holiness@lansingschools.net

McGraw-Hill Education  
Brougher, Leigh  
leigh.brougher@mheducation.com

Michigan Association of Administrators of  
Special Education (MAASE)  
Hicks, Ben  
hicksb@charemsd.org

Michigan Autism Conference  
Jenssen, Kayla  
kayla.j.jenssen@wmich.edu

Michigan Department of Education - Low  
Incidence Outreach  
Salyer, Melissa  
salyerm1@michigan.gov

Michigan Developmental Disabilities Council  
Shehan-Boogaard, Mary  
ShehanBoogaardM@michigan.gov

Michigan State University, Counseling, School Psychology  
and Special Education  
Davis, Melissa  
davisme@msu.edu

Ottawa Area ISD - Parent Advisory Committee  
Anderson, Angie  
angie.10.anderson@gmail.com

Pick-A-Stic  
Sapiano, Ronald  
admin@pickastic.com

Praises, Prizes & Presents  
Bottum, Judy  
Praises511@gmail.com

## 2020 MCEC Conference Exhibitors

Sarah Rebekkah Hunt - Author  
Hunt, Sarah Rebekkah  
sarahhunt867@gmail.com

Special Education Mediation Services  
Magyar Andrea  
andrea.magyar@mikids1st.org

SpedTrack  
Baumgardner, Mike  
mbaumgardner@spedtrack.com

St. Joseph County ISD  
Tesman, Angela  
atesman@sjcisd.org

STAR Autism Support  
Morrow, Kathryn  
stacey.johnston@starautismsupport.com

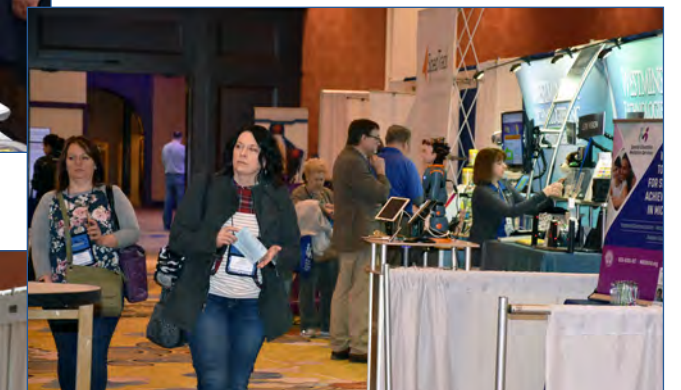
START Project  
Fitzgerald, Kellie  
fitzgek@gvsu.edu

The Family Center for Children and Youth  
with Special Health Care Needs  
Leavitt, Aleisha  
leavittA1@michigan.gov

Total Spectrum  
DeHaan, Kaylin  
kaylin.timmerman@totalspectrumcare.com

Wayne-Westland Community Schools  
Rousseau, Lindsay  
Rousseaul@wwcsd.net

Wexford-Missaukee ISD  
Simmons, Angela  
asimmons@wmisd.org





Platinum Sponsor



Service, Support and Solutions.  
That's BS&A Software.

Experience the Difference.

Financial Management Suite • Community Development Suite  
Assessing & Property Tax Suite • AccessMyGov Online Services



Get started today at [bsasoftware.com](http://bsasoftware.com)

(855) BSA-SOFT

Silver Sponsors



[www.MAASE.org](http://www.MAASE.org)

MAASE is a statewide professional educational organization affiliated with the National Council of Administrators of Special Education and the Council for Exceptional Children. MAASE members are dedicated to the enhancement of the worth, dignity, potential, and uniqueness of each individual in society.

The Mission of MAASE is to provide leadership for the development and implementation of quality programs and services for students with disabilities within the total education community.

MAASE is committed to aligning and organizing the strategic priorities and our work to focus on the following elements:

- High quality student evaluations
- Specially designed instruction
- Skilled staff
- Program evaluation



Improve each student's level of learning with  
carefully designed and supportive instruction!

Connecting  
Math Concepts



Built to the Common Core, **Connecting Math Concepts** provides explicit, systematic, intensive instruction to:

- Introduce key concepts clearly and carefully to **accelerate** student progress
- Teach students to **connect skills** and "big idea" concepts
- Monitor each student's progress daily to **differentiate instruction**
- Use explicit **strategies** that incorporate oral and written responses

Contact your sales representative today!

**Leigh Brougher**  
Specialized Solutions Group  
517-410-1776 | [leigh.brougher@mheducation.com](mailto:leigh.brougher@mheducation.com)



Bronze Sponsors



Setting the standard for legal representation of Michigan's educational institutions since 1946

- |                         |                         |                         |
|-------------------------|-------------------------|-------------------------|
| Brennan M. Ackerman     | Matthew F. Hiser        | Jennifer K. Starlin     |
| Katherine Wolf Broaddus | Robert G. Huber         | Lisa L. Swem            |
| Philip G. Clark         | Christopher J. Iamarino | Gordon W. VanWieren Jr. |
| Raymond M. Davis        | Ian. F. Koffler         | Katerina M. Vujea       |
| Robert A. Dietzel       | Martha J. Marcero       |                         |
| Michele R. Eaddy        | Daniel R. Martin        |                         |
| Timothy T. Gardner Jr.  | Piotr M. Matusiak       |                         |
| Michael D. Gresens      | Jessica E. McNamara     |                         |
| Margaret M. Hackett     | Ryan J. Nicholson       |                         |
| Fredric G. Heidemann    | Cristina T. Patzelt     |                         |
| Roy H. Henley           | Kari K. Shay            |                         |
| Kirk C. Herald          | Jeffrey J. Soles        |                         |

**EAST LANSING**  
2900 West Road  
Suite 400  
(517) 484-8000

**NOVI**  
39555 Orchard Hill Place  
Suite 430  
(248) 533-0741

**GRAND RAPIDS**  
3260 Eagle Park Drive, NE  
Suite 121  
(616) 588-7700

ThrunLaw.com



2020 Advertisers



**GREEN WITH NV, LLC**  
1264 Plainfield Ave., NE  
Grand Rapids, MI 49505  
Nathan Veeneman  
616.862.9630  
nathan@greennvgr.com  
www.greennvgr.com



Offering custom floral designs for weddings, events, and deliveries

## 2020 Advertisers



### Creating Print Solutions That Deliver Every Day of the Year

Most printers are really good at putting ink on paper. But at Foresight Group, we bring together the best technology and decades of expertise to put images and messages on just about anything you can imagine. And we can help distribute everything we produce to be sure it gets to exactly the right audience for you.

Let Foresight Group show you how we can help you build your success.

OFFSET PRINTING	DIGITAL PRINTING	MAIL SERVICES
DISPLAY AND SIGNAGE	PRECISION ADVERTISING	PROMOTIONAL PRODUCTS

2822 N. MARTIN LUTHER KING JR. BLVD. • LANSING, MI 48906  
**517.485.5700**

5204 JACKSON RD., STE. 1 • ANN ARBOR, MI 48103  
**734.761.2670**

DISCOUNT SIGNS & STAMPRITE SUPERSINE ARE FORESIGHT GROUP COMPANIES.



1700 E. MICHIGAN AVE. • LANSING, MI 48912  
**517.372.1825**



154 S. LARCH • LANSING, MI 48912  
**517.487.5071**

[www.foresightgroup.net](http://www.foresightgroup.net)

## 2020 Advertisers

DID YOU KNOW...  
that Michigan now has  
Academic Acceleration Guidelines  
for ALL districts to use for Gifted and  
Advanced Students?  
For more information:  
[www.migiftedchild.org](http://www.migiftedchild.org)



MICHIGAN school districts are continually facing shortages with Speech Pathologists and School Psychologists.  
We provide experienced professionals in a virtual setting.  
Children are motivated and driven through the use of technology. We create an interactive learning experience that our students find very engaging.



The future of speech therapy

Visit our booth to get more information

We are proud to be a Michigan based company

[www.cslti.org](http://www.cslti.org)







## Service, Support and Solutions. That's BS&A Software.

Experience the Difference.

Financial Management Suite · Community Development Suite  
Assessing & Property Tax Suite · AccessMyGov Online Services



Get started today at [bsasoftware.com](http://bsasoftware.com)

(855) BSA-SOFT





Strengthening the Field of Education to Impact  
Success for Individuals with Exceptionalities

# Michigan Council for Exceptional Children

80th Annual Conference • March 4-6, 2020



Embracing who you are. Being together.  
It's okay to not understand who you are.

It's okay to not understand  
what your emotions are.

It's okay to be different.

Uniqueness is what makes  
everyone who they are.

It's what makes you, you!

Artwork and Prose by:

**Sarah Ann Reyna**

Monroe High School  
Monroe Public Schools