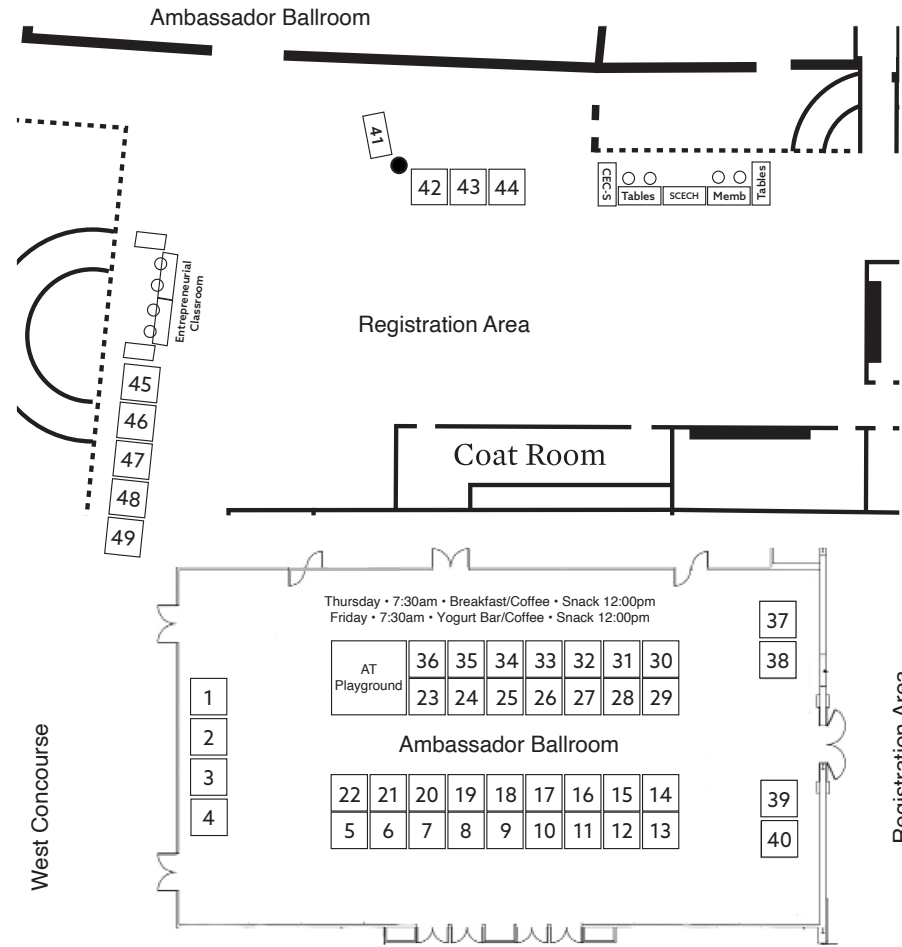


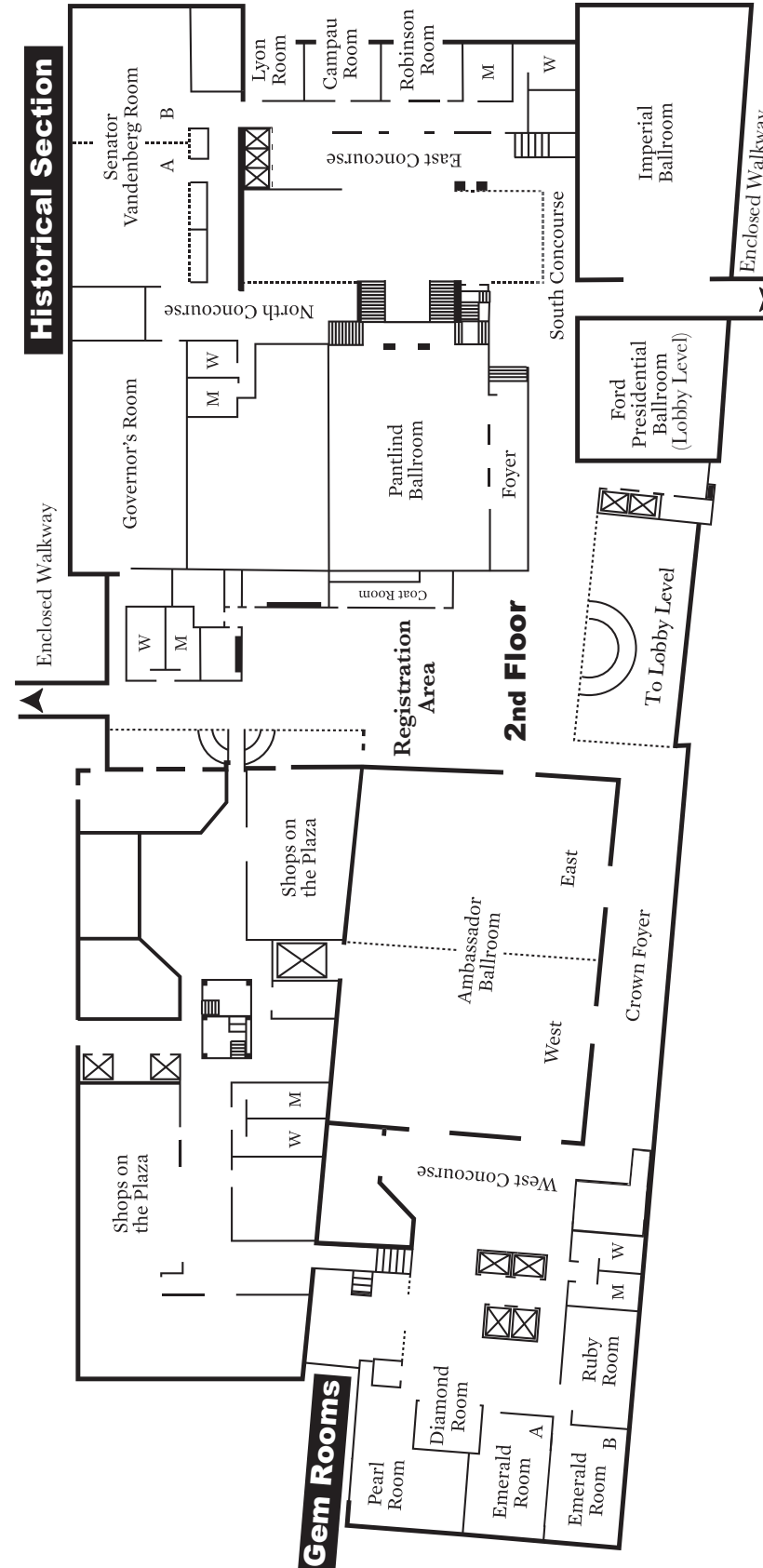
86th Annual MCEC Conference Exhibit Area

Thursday: 7:30am to 4:30pm | Friday: 7:00am to 2:00pm

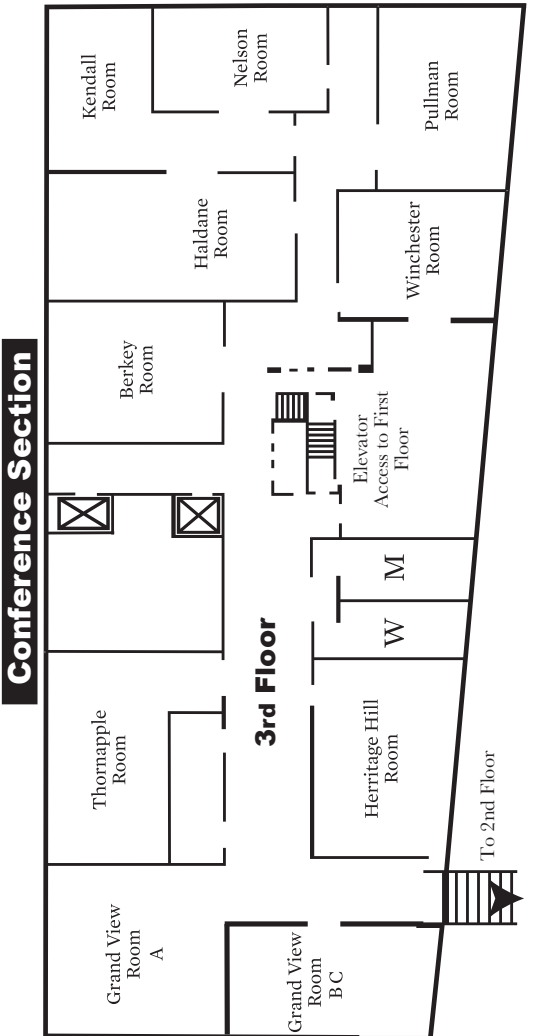


Exhibitor	Booth #	Exhibitor	Booth #
Alma College	33	MESSA	43
Alt + Shift	1	MITTIN Project	45
Boom Learning	19	Michigan Transition Services Association	42
Building Wings	30	Oakland University	32
Camp SkyWild	9	PaperPie Learning Company	40
Clinton County RESA	34	Paxton/Patterson LLC	13
Committee for Children/Second Step	6	Point Quest Group	26
Council for Exceptional Children	44	Praises, Prizes & Presents	2 & 3
Connected Health Care	27	Project Search	47
Creative Practice Collab	10	Public Consulting Group	28
DB Central	29	Ready for Life	48
Discovery Toys	5	Reeword Books	11
EPS Learning	4	REMC Association of Michigan	49
Goalbook	14	Second Step	6
GVSU - College of Education and Community		Special Education Mediation Services	25
Innovation	16	Special Olympics	7
IMSE	18	START Project	23
IXL	37	TCAPS (Traverse City Area Public Schools)	17
John Fela Advocate	12	TeachTown	15
MAASE (Michigan Association of Administrator of Special Education)	46	Till360	38
McGraw Hill	36	timelycare	39
MiDEC (Michigan Division for Early Childhood)	41	Trove Market	8
MiDDC (Michigan Developmental Disabilities Council)	21	Turning Pages	20
MDE - Resource for Blind/Low Vision and Deaf Hard of Hearing	35	Western Michigan - Spec. Ed & Literacy Studies	31
MEA (Michigan Education Association)	24	Wilson Language Training	22
		Region IV Assistive Technology Consortium (AT Playground)	AT Playground

Network Information
 Network Name: MCECParticipants
 Network Password: MICEC#86



Directions to DeVos Place:
 From the conference registration area, follow the hallway and sky-walk into DeVos Place. Once in DeVos Place, follow signs to your left for the double stairway or elevator to go down to the lower level. Follow signs through the ballroom foyer area, turn right and proceed to Ballroom C/D.



Access our conference app:

To get started scan the QR code and download the Pheedloop App that pertains to your phone. Log in using the email and password you used to register. Search for our event: 86th Annual Michigan Council for Exceptional Children Conference



2026 Michigan CEC Wednesday Workshop Schedule

Wednesday Workshops (9:00am to 4:00pm with lunch from 12:00pm to 1:00pm)

- | | |
|--|--|
| <p>Instruction (AM) - Imperial</p> <p>Law (AM) - Ford</p> <p>Personal Curriculum (AM) - Governors</p> <p>Sensory/Self-Reg (PM) - Vandenburg AB</p> | <p>Behavior (PM) - Imperial</p> <p>Early Childhood (PM) - Ford</p> <p>Families (PM) - Governors</p> <p>AT Accessibility (AM) - Vandenburg AB</p> |
|--|--|



2026 Michigan CEC Conference Thursday Day-at-a-Glance						
Room	8:15-9:15	9:30-10:30	10:45-12:00	1:00-2:00	2:15-3:15	3:30-4:30
Exhibitors: 7:30am to 4:30pm						
Historical Section – 2 nd Floor Concourse Level	Ambassador Ballroom					
	Governors	Quest for Independence: AT + VR Edition	*Design Smarter, Not Harder: Canva for Teachers and...	Annual Assembly	*Leveling Up Accessibility: Embedded Features...	**He doesn't ask for anything*: Why we aren't Teaching...
	Vandenberg A	*Where Hope Can Be Found: A Proactive Approach to Empower...	*Strategies to Prepare Students with Autism to Transition from...		*Teaching Students with Autism to Understand & Reg...	Designing a Districtwide LRE Success Team to Strengthen...
	Vandenberg B	*Culturally Responsive Instruction In Action: Teaching Boys...	Equipping Students With Meaningful Ways to Communicate...		*Prioritizing Values Over Procedures in Reducing Escalation...	*The Power of the 5-Point Scale: Supporting...
Gem Rooms – 2 nd Floor Concourse Level	Emerald A	*Courageous Communication: Strengthening Collaboration...	*Routines-Based Assessment and Service Provision in Preschool...		*Early On 101	*Myths & Misconceptions about 1755 ECSE...
	Emerald B	*Empowering Young Children Through Functional Communication & AAC	*So, You Did An EBR, Now What?		Cognitive Engagement, Family Partnership, and Functional Participation	*Integrating Diagnostic Assurances in your PLAAFP
	Pearl	*Guiding the IEP Process: An Overview of New Guidance	*Rooted in Equity, Growing in Practice		Michigan Department of Education Town Hall	
	Ruby	Supporting Struggling and Dyslexic Readers through Structured...	Building the Foundational Writing and Pre-Vocational Skills...		From Exclusion to Belonging: Redefining Disability and...	*Welcoming All Students with Diverse Needs: Growing...
Conference Level – 3 rd Floor	Berkey	Connecting Through Experience: Understanding and Supporting...	Shared Decisions, Shared Outcomes: Strengthening LRE Through...		Whose Voice Counts When Needs Are Complex? Supporting...	*Functional Behavioral Assessments (FBAs):
	Grand View A	*Moving Together Toward Wellness: Chair Yoga for Inclusive...			*Teaching to autism... techniques that work!	*Leadership Beyond the Walls: Building Culture/Climate, Compliance
	Grand View B/C	*Para Pathways: Building Strong Foundations for Student Success	*The Art of Collaboration: Building Teacher-Paraeducator Teams		*Collaborative Communication in Special Education	*Meaningful Engagement in the IEP Process and Beyond: Enhancing Collab
	Haldane	**Harnessing the Power of Gratitude: Building Resiliency in Education			Transition Services done RIGHT!! Skill attainment to gainful...	*The MITTIN + AI Advantage: Elevating the Transition...
	Heritage Hill	Standards for All: Strategies for Standards-Based Instruction in Complex Classrooms	*SDI in Action: From Theory to Transformative Practice		**Family Partnerships and MTSS	
	Kendall	*Alternative Pathways to HS Graduation: Creating Systems Using Personal...	*Choose Your Own Tour-Venture!		**Prepare students for healthy relationships as they leave school settings: The need for body autonomy is critical for all	
	Nelson	Dismantling Bias: Strategies to Mitigate Implicit Bias and Foster Belonging			Accommodation Log Tracker Made Easy for Teachers	Safe and Legal Support of Student's Health and Medication Needs
	Thornapple	*From One to Many: Building an Assistive Tech Movement in our ISD	*The Focused Leader: Building Sustainable Leadership and ...		*Michigan and Washington Update: Legislative Advocacy to Support Special Edu.	*Becoming a Special Education Teacher in Michigan
	Winchester	The Silent Curriculum: How Psychological Safety Empowers Special Education Teams	*Bringing the "Notice of FAPE Offer" to Life: Capturing the Heart of the IEP		*We've looked forward to this night for months!": Creating...	*Pathological Demand Avoidance: Bridging Understanding & Practice
	Pantlind (2 nd Floor)	Advocating with Grace: Communicating and Collaborating ...	Make it and Take it: Zones of Regulation		*The Tools: Character-inspired resources, videos, and activities	Igniting Change Together: Strengthening...
	Ford (1 st Floor)	Accessibility: Empowering All Learners	Engaging Early Learners		Student Social 12:00 - 2:00pm	**Behavior as Communication: Rethinking Our Role and Response
	Imperial (1 st Floor)		*Neurodivergent Readers Thrive with Self-regulation Tools...			*Increasing Engagement & Mentorship Opportunities for Pre-Service ...
						*Building Bridges in Discipline Protections: Conversations That Work

Joe Beckman - Keynote • DeVos Place • Ballroom B/C/D
Exhibitor Booths Open • Ambassador Ballroom

Poster Sessions and Exhibitors – Ambassador Ballroom
Book Signing • Joe Beckman • Registration Area

*Approved for 1 SSW CE **Approved for 2 SSW CE

2026 Michigan CEC Conference Friday Day-at-a-Glance					
Room	8:15-9:15	9:30-10:30	10:45-12:00	1:00-2:00	2:15-3:15
Exhibitors: 7:30am to 2:00pm					
Historical Section – 2 nd Floor Concourse Level	Ambassador Ballroom				
	Governors	*Virtual to Vital: VR Resources That Build Independence	*Tech Feud: The Ultimate Inclusive Technology Showdown		*From Insight to Impact: Building Inclusive Classrooms with UDL...
	Vandenberg A	Teaching Exceptional Learners with AI: Free REMC Tools for Every...	UDL in Explicit Instruction: What, How, & Why		*AAC (Augmentative Alternative Communication) - The What, Why, Who...
	Vandenberg B	**Looking Beyond the Buzz Words: Behavior and Today's Students			*Executive Functioning: The Missing Skills Holding Students Back—How Can...
Gem Rooms – 2 nd Floor Concourse Level	Emerald A	*Vision and Hearing Basics: How Infants and Toddlers See and Hear & What Happens...	*Empowering Early Learners: How Build Up and Help Me Grow...		Rethinking Math Instruction to Support the Brain
	Emerald B	*Personal Curriculums for Students with IEPs	*Why we should model AAC, even if we understand our students		Cooperation, Prevention, Interventions: Engaging educators through positive behavior supports
	Pearl	The MDR Survival Guide: Keep Calm and Facilitate On	*Elevating the General Ed Voice in the Determination of FAPE in the LRE...		*Empowering ALL Learners Through Comprehensive Literacy
	Ruby		*Annual Considerations for the IEPs of English Learners		**The IEP Journey: Meaningful Participation from Start to Finish
Conference Level – 3 rd Floor	Berkey	**Empowering Students with High Behavior Support Needs: A Progressive Approach to Skill Development			Meaningful Employment: What It Is and How Does My Child Get It?
	Grand View A	More Than a Seat at the Table: How Teacher Voices Shape MDR Decisions	*Beyond the Label: Building Inclusive Classrooms for Students with Emotional Impairments		*LRE & Placement Decisions
	Grand View B/C	*Empowering Paraeducators: Building Inclusive Learning Communities Through Professional Growth	*No One Taught Us This: How to Work With Paras, Not Beside Them		*Seclusion & Restraint Internal Review Process
	Haldane	*Teaching Essential Life Skills to Students with Disabilities via a Michigan...	Navigating the Journey of Supported Independence in the Community		*From Awareness to Action: Applying Culturally Responsive Teaching to...
	Heritage Hill	Ensuring Access for All: Building Strong Foundations in...	Getting Clear on Specially Designed Instruction: From...		A Guide to Multidisciplinary Assessments: Demystifying Evaluations for Families and Educators
	Kendall	Special Needs Planning	Prior Written Notice - Everything You Need to Know!		*Adaptive Books, Accessible Literacy: Increasing Engagement for...
	Nelson	**Leading with Real Colors®: How Understanding People Builds Wellness and Belonging			Raising Rigor: Improving Outcomes for Students in Self-Contained Classrooms
	Thornapple	*Supporting a Strong Special Education Workforce: Approvals ...	*Transition... Who's Job Is It?		**Transformative Constructs for Self-Determined People: Educational Equity
	Winchester	**Check Yes or No: A Flowchart for Confident Consideration of Assistive Technology			*A Day in the Life of a Lead Special Education Teacher In Action
	Pantlind (2 nd Floor)		Legislative Event		*Leading from the Middle: Aligning Compliance, Coaching, and Capacity...
	Ford (1 st Floor)	**Progress Monitoring: From "Whhhhaatt!?! to What's next -- I'm ready!!!"			**Implementing TBRI®: Trauma-Informed Strategies to Support Students' Social-Emotional Growth
	Imperial (1 st Floor)	Neurodiversity Affirming Engagement Strategies: Seeking to Understand and Support Our Neurodivergent Students			Launching Your Teaching Journey: A Panel for Early Career Success
					Essential Paradigm Shifts in how we Counsel our Tweens/Teens
					Play, Belong, Thrive: Leveraging Unified Champion Schools, Young Athletes, and...
					Engineering Empathy: How our Robotics Team is 3D Printing the Future of...
				Unmasking My Experience: Life and Learning With Level 1 ASD	

Ben Tillotson • National CEC Welcome • DeVos Ballroom B/C/D
Teri Rink • State of the State • DeVos Place Ballroom B/C/D
Exhibit Hall Open – Ambassador Ballroom

*Approved for 1 SSW CE **Approved for 2 SSW CE

**Join us for the Recognition & Scholarship Ceremony - DeVos Place - Ballroom B/C/D
4:45pm - Drinks/Cashless Bar & Appetizers | 5:15pm - Ceremony Begins**